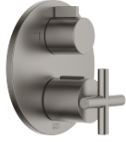


TARA Concealed thermostat with two function volume control - Brushed Dark Platinum

TARA

36 426 892



- rotary diverter with volume control and shut-off function
- cover plate Ø 150 mm
- temperature control handle with safety limit stop at 38°C
- hot water temperature limiter, can be preset
- WRAS 1906098

	Brushed Dark Platinum	36 426 892-99
	Chrome	36 426 892-00
	Brushed Platinum	36 426 892-06
	Platinum	36 426 892-08
	Dark Chrome	36 426 892-19
	Brushed Durabronze (23kt Gold)	36 426 892-28
	Matte Black	36 426 892-33
	Brushed Bronze	36 426 892-42
	Brushed Champagne (22kt Gold)	36 426 892-46
	Champagne (22kt Gold)	36 426 892-47
	Brushed Chrome	36 426 892-93

Required miscellaneous



- Concealed thermostat -** 35 425 970 90
- min. recess depth 80 mm
 - max. recess depth 136 mm

Recommended miscellaneous



- xGRID Attachment set for integrating in the dry wall construction -** 12 340 970 90

Required miscellaneous



- Concealed thermostat with built-in isolators -** 35 426 970 90
- max. recess depth 136 mm
 - min. recess depth 80 mm

Required miscellaneous

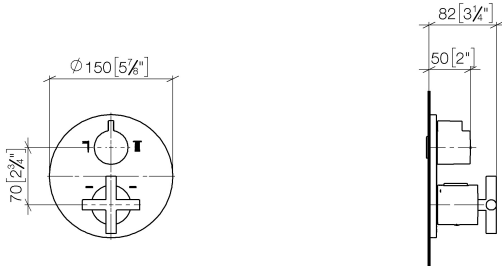


- xGRID Installation track 555 mm -** 12 360 970 90

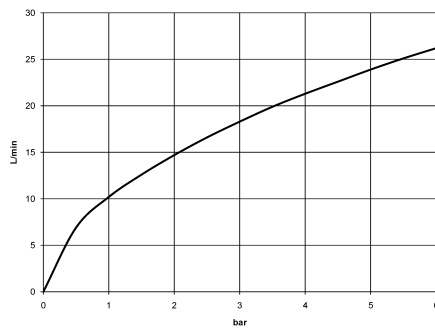
TARA Concealed thermostat with two function volume control - Brushed Dark Platinum

TARA

36 426 892
mm [inches]



Flow rate chart



Codes & Standards

DIN 4109

ISO 3822

Scottish Water
Byelaws

UK Water Supply
Regulations

Ü-Zeichen



TARA Concealed thermostat with two function volume control - Brushed Dark
Platinum

TARA

36 426 892

Certificates

WRAS_1906

LGA_19

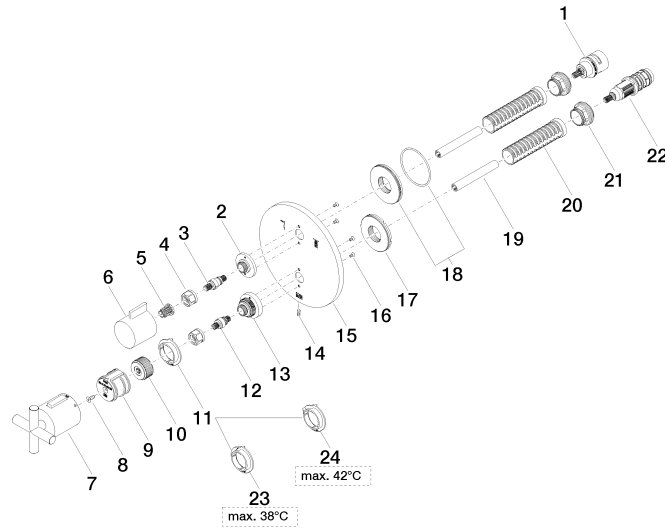
LGA_19

TARA Concealed thermostat with two function volume control - Brushed Dark Platinum

TARA

36 426 892

Product version from 5/1/2022





TARA Concealed thermostat with two function volume control - Brushed Dark
Platinum

TARA

36 426 892

Spare parts list

Product version from 5/1/2022

No.	Item Number	Name	Quantity used	Delivery time
	90 90 03 163 00 90	diverter	31	2