

MADISON Concealed thermostat with two function volume control - Durabrand (23kt Gold)

MADISON

36 426 977
Product version up to 8/24/2020

- rotary diverter with volume control and shut-off function
- cover plate Ø 175 mm
- temperature control handle with safety limit stop at 38°C
- hot water temperature limiter, can be preset
- WRAS

	Durabrand (23kt Gold)	36 426 977-09
	Chrome	36 426 977-00
	Brushed Platinum	36 426 977-06
	Platinum	36 426 977-08
	Brushed Durabrand (23kt Gold)	36 426 977-28
	Brushed Dark Brass	36 426 977-39
	Brushed Dark Platinum	36 426 977-99

Required miscellaneous

Concealed thermostat -

max. recess depth 136 mm

min. recess depth 80 mm

35 425 970 90

Recommended miscellaneous

xGRID Attachment set for integrating in the dry wall construction -

12 340 970 90

Required miscellaneous

Concealed thermostat with built-in isolators -

max. recess depth 136 mm

min. recess depth 80 mm

35 426 970 90

Required miscellaneous

xGRID Installation track 555 mm -

12 360 970 90

MADISON Concealed thermostat with two function volume control - Durabrass (23kt Gold)

MADISON

36 426 977 Product version up to 8/24/2020
mm [inches]



Flow rate chart



Codes & Standards

DIN 4109	EN 1111	ISO 3822	Scottish Water Byelaws
UK Water Supply Regulations	Ü-Zeichen	VA-Zeichen	XP P 41-280



MADISON Concealed thermostat with two function volume control - Durabrass
(23kt Gold)

MADISON

36 426 977 Product version up to 8/24/2020

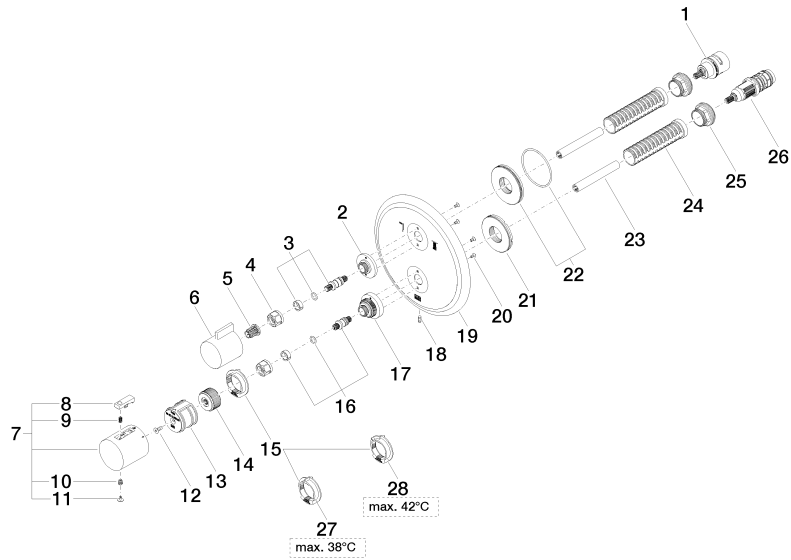
Certificates and sustainability

ACS_20 ACC LY	LGA_19	ETA_20	DVGW_DW- 6512DN0	LGA_19
WRAS_250402				

MADISON Concealed thermostat with two function volume control - Durabrass (23kt Gold)

MADISON

36 426 977 Product version up to 8/24/2020





MADISON Concealed thermostat with two function volume control - Durabrass (23kt Gold)

MADISON

36 426 977 Product version up to 8/24/2020

Spare parts list

No.	Item Number	Name	Quantity used	Delivery time
28	09 28 10 151 90	regulator	1.00	60
15	09 28 10 143 90	regulator	1.00	60
25	09 24 04 257 90	nut	2.00	2
5	90 12 12 002 00 90	fixing cap	1.00	2
21	09 30 01 296 90	disc	1.00	2
1	90 90 03 163 00 90	diverter	1.00	2
17	09 12 12 051-09	base	1.00	60
20	09 30 30 157 90	screw	4.00	2
7	90 17 33 004 00-09	handle	1.00	40
19	09 11 02 308-09	plate	1.00	60
2	09 12 12 053-09	base	1.00	60
18	09 31 11 134 90	pin	1.00	2
14	09 12 12 054 90	base	1.00	2
9	90 16 02 027 00 90	spring	1.00	2
22	90 30 01 190 00 90	disc	1.00	2
6	09 20 67 006-09	handle	1.00	60
26	90 15 02 012 00 90	cartridge	1.00	60
27	09 28 10 150 90	regulator	1.00	60
24	90 18 40 077 01 90	spindle	2.00	2
4	90 23 30 023 00 90	nut	2.00	2
13	90 12 12 052 00 90	base	1.00	2
12	90 30 30 124 00 90	screw	1.00	2
23	90 23 01 124 00 90	sleeve	2.00	2
10	90 30 30 136 00 90	screw	1.00	2
16	04 29 06 024 01-00	spindle	1.00	10
3	04 29 06 111 01-00	spindle	1.00	10
11	90 31 20 049 00-13	plug	1.00	30
8	90 21 33 011 00-13	handle	1.00	2