





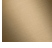


MADISON Concealed thermostat with two function volume control - Brushed Dark Platinum
MADISON

36 426 977
Product version up to 8/24/2020



- rotary diverter with volume control and shut-off function
- cover plate Ø 175 mm
- temperature control handle with safety limit stop at 38°C
- hot water temperature limiter, can be preset
- WRAS

	Brushed Dark Platinum	36 426 977-99
	Chrome	36 426 977-00
	Brushed Platinum	36 426 977-06
	Platinum	36 426 977-08
	Durabrass (23kt Gold)	36 426 977-09
	Brushed Durabrass (23kt Gold)	36 426 977-28
	Brushed Dark Brass	36 426 977-39

Required miscellaneous



**Concealed thermostat with built-in isolators -**
35 426 970 90

- max. recess depth 136 mm
- min. recess depth 80 mm

Recommended miscellaneous



**xGRID Attachment set for integrating in the dry wall construction -**
12 340 970 90

Required miscellaneous



**Concealed thermostat -**
35 425 970 90

- max. recess depth 136 mm
- min. recess depth 80 mm

Required miscellaneous



**xGRID Installation track 555 mm -**
12 360 970 90

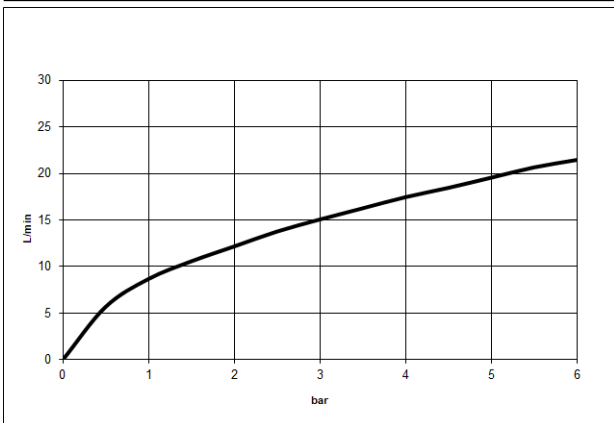
## MADISON Concealed thermostat with two function volume control - Brushed Dark Platinum

MADISON

36 426 977 Product version up to 8/24/2020  
mm [inches]



### Flow rate chart



### Codes & Standards

DIN 4109	EN 1111	ISO 3822	Scottish Water Byelaws
UK Water Supply Regulations	Ü-Zeichen	VA-Zeichen	XP P 41-280



MADISON Concealed thermostat with two function volume control - Brushed  
Dark Platinum

MADISON

36 426 977    Product version up to 8/24/2020

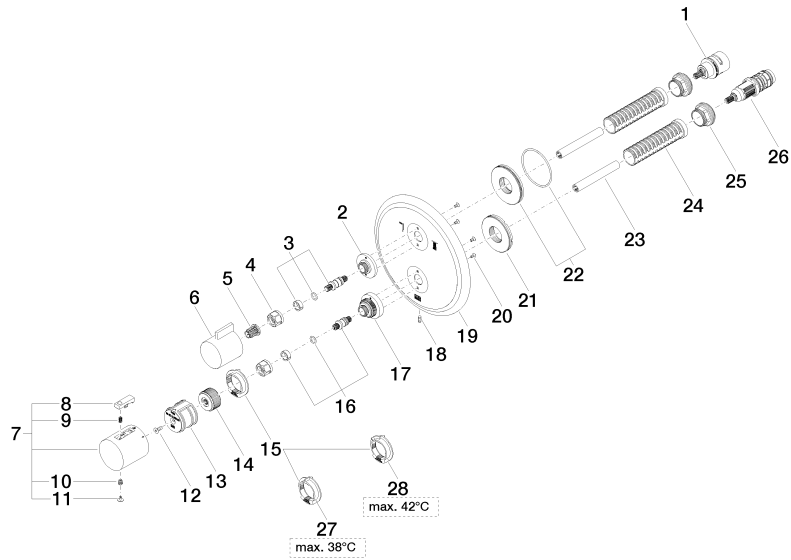
Certificates and sustainability

ACS_20 ACC LY	LGA_19	ETA_20	DVGW_DW- 6512DN0	LGA_19
WRAS_250402				

# MADISON Concealed thermostat with two function volume control - Brushed Dark Platinum

MADISON

36 426 977 Product version up to 8/24/2020





## MADISON Concealed thermostat with two function volume control - Brushed Dark Platinum

MADISON

36 426 977 Product version up to 8/24/2020

### Spare parts list

No.	Item Number	Name	Quantity used	Delivery time
26	90 15 02 012 00 90	cartridge	1.00	60
28	09 28 10 151 90	regulator	1.00	60
15	09 28 10 143 90	regulator	1.00	60
22	90 30 01 190 00 90	disc	1.00	2
18	09 31 11 134 90	pin	1.00	2
6	09 20 67 006-99	handle	1.00	20
7	90 17 33 004 00-99	handle	1.00	20
5	90 12 12 002 00 90	fixing cap	1.00	2
27	09 28 10 150 90	regulator	1.00	60
1	90 90 03 163 00 90	diverter	1.00	2
21	09 30 01 296 90	disc	1.00	2
2	09 12 12 053-99	base	1.00	20
14	09 12 12 054 90	base	1.00	2
20	09 30 30 157 90	screw	4.00	2
25	09 24 04 257 90	nut	2.00	2
19	09 11 02 308-99	plate	1.00	60
9	90 16 02 027 00 90	spring	1.00	2
17	09 12 12 051-99	base	1.00	20
24	90 18 40 077 01 90	spindle	2.00	2
11	90 31 20 049 00-13	plug	1.00	30
13	90 12 12 052 00 90	base	1.00	2
16	04 29 06 024 01-00	spindle	1.00	10
23	90 23 01 124 00 90	sleeve	2.00	2
12	90 30 30 124 00 90	screw	1.00	2
3	04 29 06 111 01-00	spindle	1.00	10
4	90 23 30 023 00 90	nut	2.00	2
10	90 30 30 136 00 90	screw	1.00	2
8	90 21 33 011 00-13	handle	1.00	2