

VAIA Wall-mounted single-lever basin mixer without pop-up waste - Dark Chrome

VAIA

36 860 809



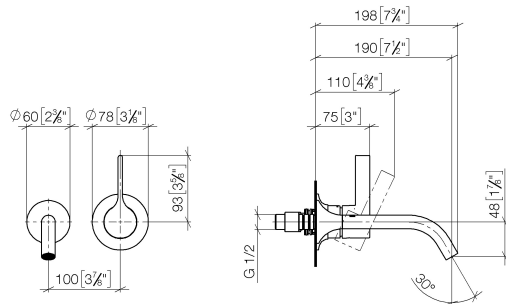
- 190mm projection
- fixed spout
- circular, air-enriched flow
- hole diameter spout 37 mm
- hole diameter single-lever mixer 57 mm
- rosette for single-lever mixer Ø 78mm
- rosette for spout Ø 60mm
- max. flow 5.7 l/min
- lead-free
- This product can help a building meet the requirements of Green Building Rating Systems, e.g. LEED®, BREEAM®, DGNB
- WRAS 2107018

| | | |
|--|--------------------------------|---------------|
|  | Dark Chrome | 36 860 809-19 |
|  | Chrome | 36 860 809-00 |
|  | Brushed Platinum | 36 860 809-06 |
|  | Platinum | 36 860 809-08 |
|  | Brushed Durabronze (23kt Gold) | 36 860 809-28 |
|  | Brushed Bronze | 36 860 809-42 |
|  | Brushed Champagne (22kt Gold) | 36 860 809-46 |
|  | Champagne (22kt Gold) | 36 860 809-47 |
|  | Brushed Dark Platinum | 36 860 809-99 |

VAIA Wall-mounted single-lever basin mixer without pop-up waste - Dark Chrome

VAIA

36 860 809
mm [inches]



Flow rate chart



Trajectory diagram



Codes & Standards

EN 817

Scottish Water
Byelaws

UK Water Supply
Regulations



VAIA Wall-mounted single-lever basin mixer without pop-up waste - Dark Chrome

VAIA

36 860 809

Certificates

WRAS_2107

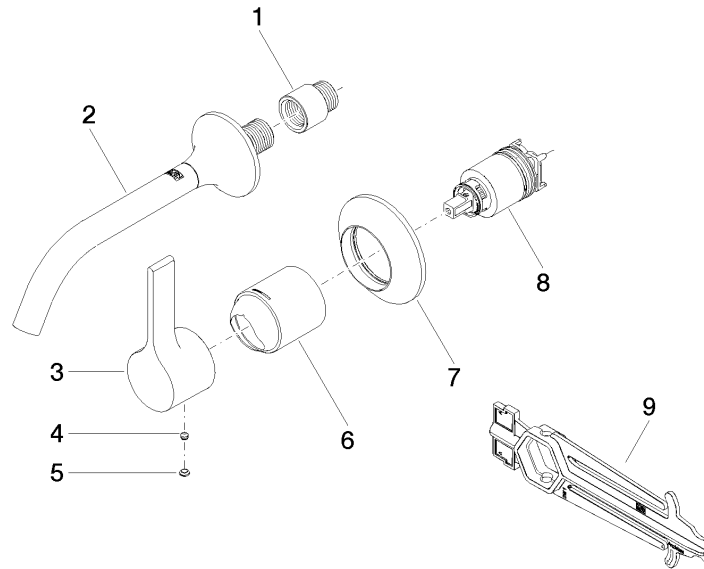
DVGW_DW-
6512DN0

VAIA Wall-mounted single-lever basin mixer without pop-up waste - Dark Chrome

VAIA

36 860 809

Parts for other
finishes can be found
here: [Chrome](#)





VAIA Wall-mounted single-lever basin mixer without pop-up waste - Dark Chrome

VAIA

36 860 809

Spare parts list