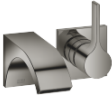


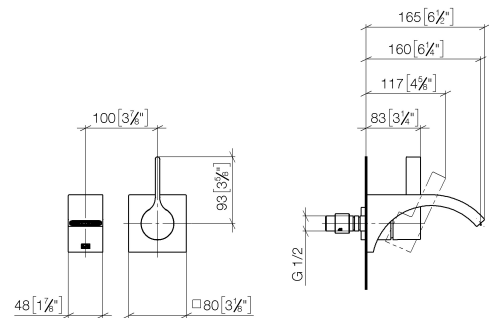
CYO Wall-mounted single-lever basin mixer without pop-up waste - Dark Chrome

|   |   |  |  |
|---|---|--|--|
| 36 860 811  |   |  |  |
|  | <ul style="list-style-type: none"> <li>• 160mm projection</li> <li>• fixed spout</li> <li>• rectangular, air-enriched flow</li> <li>• hole diameter spout 37 mm</li> <li>• hole diameter single-lever mixer 57 mm</li> <li>• rosette for mixer 80 x 80mm</li> <li>• max. flow 4.5 l/min</li> <li>• lead-free</li> <li>• This product can help a building meet the requirements of Green Building Rating Systems, e.g. LEED®, BREEAM®, DGNB</li> <li>• WRAS</li> </ul> | <div> <div></div> <div>Dark Chrome</div> <div>36 860 811-19</div> </div> <div> <div></div> <div>Chrome</div> <div>36 860 811-00</div> </div> <div> <div></div> <div>Brushed Platinum</div> <div>36 860 811-06</div> </div> <div> <div></div> <div>Brushed Durabrass (23kt Gold)</div> <div>36 860 811-28</div> </div> <div> <div></div> <div>Brushed Dark Platinum</div> <div>36 860 811-99</div> </div> |  |

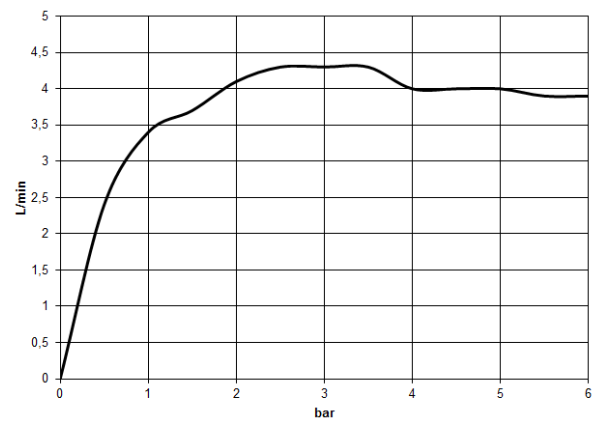


CYO Wall-mounted single-lever basin mixer without pop-up waste - Dark Chrome

36 860 811  
mm [inches]



Flow rate chart



Codes & Standards

ASME A112.18.1

cUPC

NSF372

NSF61



CYO Wall-mounted single-lever basin mixer without pop-up waste - Dark  
Chrome

---

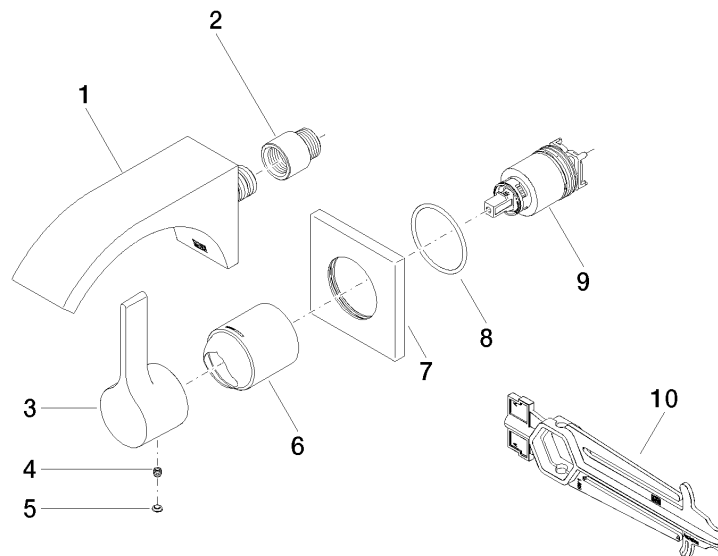
36 860 811  
Certificates

---

IAPMO\_N-4976      IAPMO\_6397      IAPMO\_4976 (

## CYO Wall-mounted single-lever basin mixer without pop-up waste - Dark Chrome

36 860 811  
Parts for other  
finishes can be found  
here: [Chrome](#)



### Spare parts list

| No. | Item Number        | Name  | Quantity used | Delivery time |
|-----|--------------------|---|---------------|---------------|
| 1   | 13 800 811-19      | CYO Wall-mounted basin spout without pop-up waste - Dark Chrome | 1             | 20            |
| 2   | 09 24 03 072 10 90 | nipple  | 1             | 2             |
| 3   | 09 20 80 021-19    | handle  | 1             | 20            |
| 4   | 90 31 11 030 00 90 | pin   | 1             | 2             |
| 5   | 90 31 20 087 00-19 | plug  | 1             | 20            |
| 6   | 09 11 02 288-19    | cover   | 1             | 20            |
| 7   | 09 27 78 039-19    | rosette   | 1             | 20            |
| 8   | 90 14 10 049 00 90 | seal  | 1             | 2             |
| 9   | 90 15 05 064 01 90 | cartridge   | 1             | 2             |
| 10  | 90 30 09 064 00 90 | key   | 1             | 2             |