

Single sink - Brushed Stainless Steel

SERIES-VARIOUS

38 400 004    Product version from 1/1/2025



- under-mounted
  - 400 x 400 mm
  - sink depth 175 mm
  - suitable for base units 450 mm
  - Radius 15 mm
- Drain and overflow set not included in the scope of supply. See Required miscellaneous.**
- Drain and overflow set not included in the scope of supply. See Required miscellaneous.

Required miscellaneous



**Pop-up waste and overflow with electronic control**

10 410 004-86

Required miscellaneous

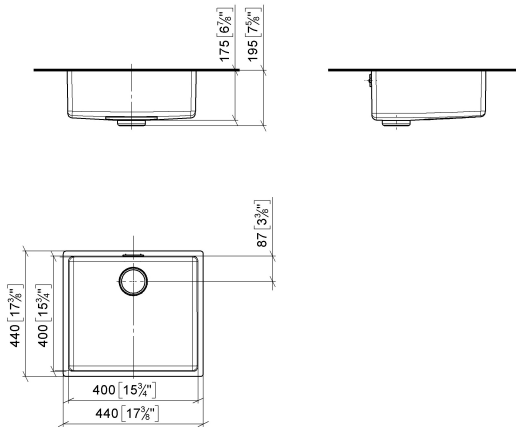


**Basin Waste mechanical**

10 405 004-86

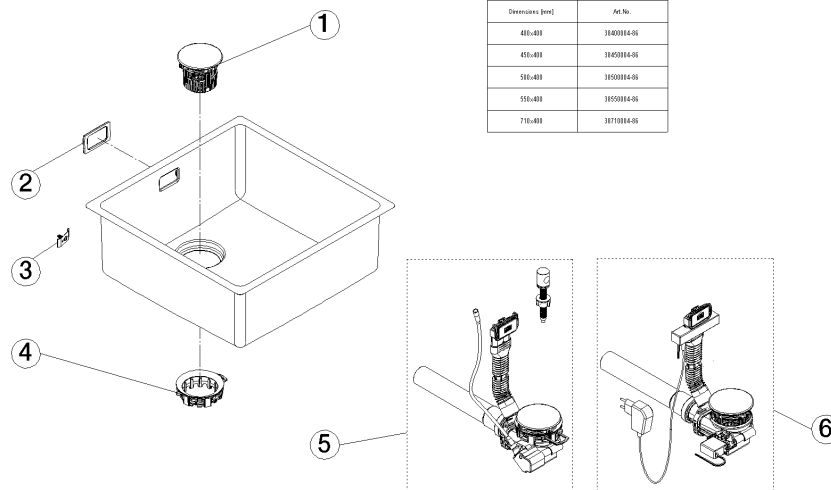
38 400 004    Product version from 1/1/2025

mm [inches]  
1:10



Certificates and sustainability

Leistungserklärung\_ declaration\_of\_perfo  
DOD rmance\_DOD



## Spare parts list

| No. | Item Number        | Name  | Quantity used | Delivery time |
|-----|--------------------|---|---------------|---------------|
| 2   | 90 11 01 125 00 90 | seal  | 1.00          | 30            |
| 5   | 10 405 004-86      | Basin Waste mechanical                            | 1.00          | 2             |
| 6   | 10 410 004-86      | Pop-up waste and overflow with electronic control | 1.00          | 2             |
| 3   | 90 38 00 010 00 90 | fixing set  | 1.00          | 30            |
| 1   | 90 11 01 135 00-86 | strainer  | 1.00          | 30            |
| 4   | 90 11 01 211 00 90 | pop-up waste                                      | 1.00          | 30            |