

MEM xTOOL Thermostat module with 3 valves - Dark Chrome

MEM

ST 060 110 9780



- cover plate 120 x 120 mm
 - rosette 60 x 60 mm
 - temperature control handle with safety limit stop at 38°C
 - thermostat cartridge
 - 3x head part with cut-to-length spindle and sleeve
- 36 503 985-FF can also be used as an alternative.**

	Dark Chrome	ST 060 110 9780-19
	Chrome	ST 060 110 9780-00
	Brushed Platinum	ST 060 110 9780-06
	Platinum	ST 060 110 9780-08
	Brushed Durabronz (23kt Gold)	ST 060 110 9780-28
	Brushed Champagne (22kt Gold)	ST 060 110 9780-46
	Champagne (22kt Gold)	ST 060 110 9780-47
	Brushed Chrome	ST 060 110 9780-93
	Brushed Dark Platinum	ST 060 110 9780-99

Individual components of this set

You need the following components for this set



1x 36 503 780-19



3x 36 607 782-19

MEM xTOOL Thermostat module with 3 valves - Dark Chrome

MEM

ST 060 110 9780



Fits: IMO, MEM, CL.1, CYO

- cover plate 120 x 120 mm
- temperature control handle with safety limit stop at 38°C
- thermostat cartridge
- WRAS 2011026

	Dark Chrome	36 503 780-1
	Chrome	36 503 780-0
	Brushed Platinum	36 503 780-0
	Platinum	36 503 780-0
	Brushed Light Gold	36 503 780-2
	Brushed Durabronz (23kt Gold)	36 503 780-2
	Matte Black	36 503 780-3
	Brushed Champagne (22kt Gold)	36 503 780-4
	Champagne (22kt Gold)	36 503 780-4
	Brushed Chrome	36 503 780-9
	Brushed Dark Platinum	36 503 780-9

ST 060 110 9780

9
—
0
—
6
—
8
—
7
—
8
—
3
—
6
—
7
—
3
—
9
—

Required miscellaneous



xTOOL Concealed thermostat module without volume control - 35 503 970 90
•max. recess depth 155 mm
•min. recess depth 115 mm

Recommended miscellaneous



xGRID Attachment set for integrating in the dry wall construction - 12 340 970 90

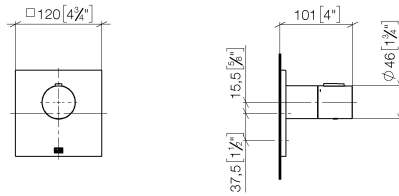
Required miscellaneous



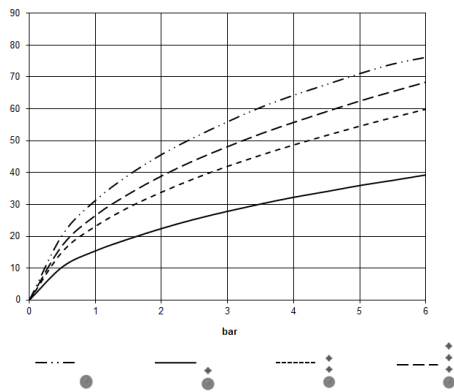
xGRID Installation track 555 mm - 12 360 970 90

ST 060 110 9780

mm [inches]



Flow rate chart

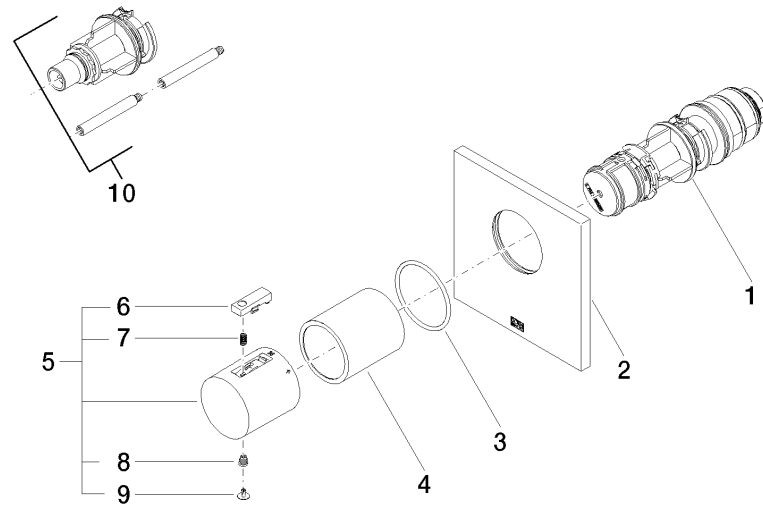


Certificates

LGA_29 DVGW_DW-6512DN0 WRAS_2011

Codes & Standards

DIN 4109	EN 1111	ISO 3822	Scottish Water Byelaws
UK Water Supply Regulations	Ü-Zeichen		



ST 060 110 9780

Spare parts list



- rosette 60 x 60 mm
- head part with cut-to-length spindle and sleeve
- WRAS 2011026, 2010066

	Dark Chrome	36 607 782-1
	Chrome	36 607 782-0
	Brushed Platinum	36 607 782-0
	Platinum	36 607 782-0
	Brushed Durabass (23kt Gold)	36 607 782-2
	Brushed Champagne (22kt Gold)	36 607 782-4
	Champagne (22kt Gold)	36 607 782-4
	Brushed Chrome	36 607 782-9
	Brushed Dark Platinum	36 607 782-9

ST 060 110 9780

9
—
10
—
16
—
18
—
18
—
6
—
7
—
13
—
19
—

Required miscellaneous



- Wall valve 1/2" -
- max. recess depth 150 mm
 - min. recess depth 105 mm

35 607 970 90

ST 060 110 9780

mm [inches]

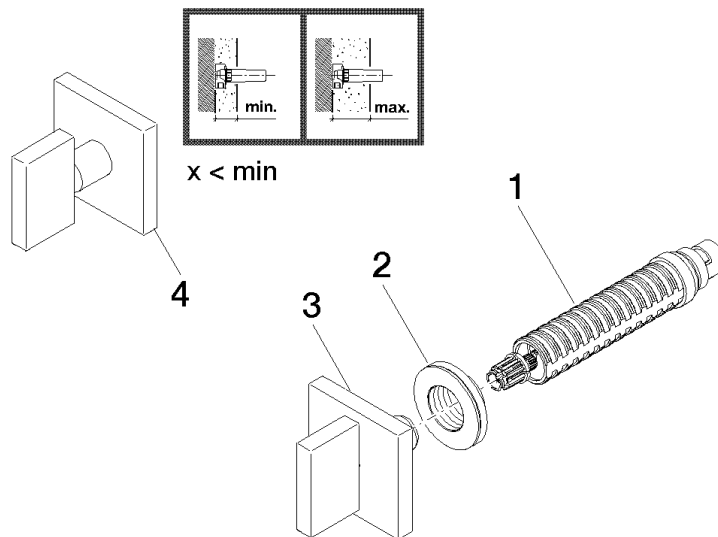


Certificates

DVGW_DW-6501DN0	WRAS_2010	LGA_29	DVGW_DW-6512DN0	WRAS_2011
-----------------	-----------	--------	-----------------	-----------

Codes & Standards

DIN 4109	EN 1111	EN 200	ISO 3822
Scottish Water Byelaws	UK Water Supply Regulations	Ü-Zeichen	



Spare parts list