

# ELIO HOT & COLD WATER DISPENSER - Brushed Dark Platinum

ELIO

17 871 790 Product version from 3/1/2025



- 142mm projection
- pivotable spout 360°
- laminar flow
- height of mixer 250 mm
- height up to laminar flow regulator 227 mm
- hole diameter 35 mm
- provides filtered, hot water up to 93°C
- Provides filtered water
- max. flow 3.8 l/min at 3 bar flow pressure
- mechanical valve
- lead-free
- lever

• This product can help a building meet the requirements of Green Building Rating Systems, e.g. LEED®, BREEAM®, DGNB

**A minimum flow pressure of 3 bar is necessary for the HOT & COLD WATER DISPENSER to work perfectly in conjunction with a hot water tank and filter.**

**The installation must be above a kitchen sink.**

**The filter cartridge must be changed every six months. The installation instructions contain further information for guidance.**

**Detailed planning information and technical data can be found at**

**[www.dornbracht.com/professional](http://www.dornbracht.com/professional)**

**Not compatible with reverse osmosis filtration**

**Provides constantly boiling water by turning the lever forward – version without scalding protection.**

A minimum flow pressure of 3 bar is necessary for the HOT & COLD WATER DISPENSER to work perfectly in conjunction with a hot water tank and filter.

The installation must be above a kitchen sink.

The filter cartridge must be changed every six months. The installation instructions contain further information for guidance.

Detailed planning information and technical data can be found at [www.dornbracht.com/professional](http://www.dornbracht.com/professional)

Not compatible with reverse osmosis filtration

Provides constantly boiling water by turning the lever forward – version without scalding protection.

|   |                                |               |
|---|--------------------------------|---------------|
|    | Brushed Dark Platinum          | 17 871 790-99 |
|    | Chrome                         | 17 871 790-00 |
|    | Brushed Platinum               | 17 871 790-06 |
|    | Platinum                       | 17 871 790-08 |
|    | Dark Chrome                    | 17 871 790-19 |
|    | Brushed Durabronze (23kt Gold) | 17 871 790-28 |
|    | Brushed Bronze                 | 17 871 790-42 |
|    | Brushed Champagne (22kt Gold)  | 17 871 790-46 |
|    | Champagne (22kt Gold)          | 17 871 790-47 |
|  | Brushed Chrome                 | 17 871 790-93 |

## Required miscellaneous

Hose set

12 530 970 90



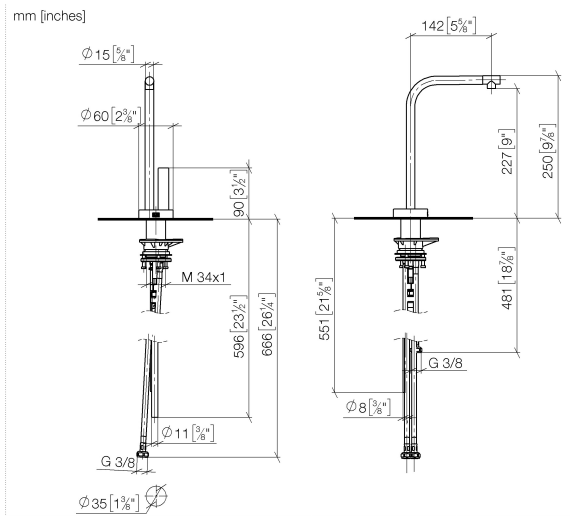
## Required miscellaneous

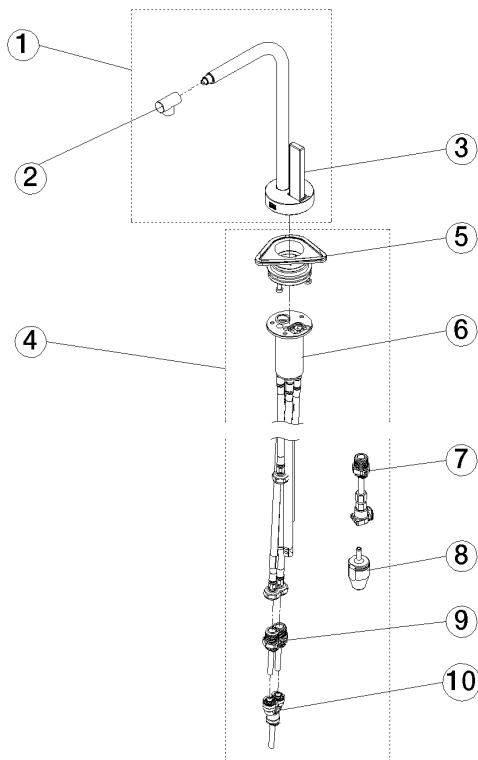
Hot water tank incl. filter -

12 892 970 90



17 871 790 Product version from 3/1/2025





## Spare parts list

| No. | Item Number        | Name       | Quantity used | Delivery time |
|-----|--------------------|------------|---------------|---------------|
| 1   | 90 17 87 179 00-99 | spout      | 1.00          | 20            |
| 3   | 90 20 87 028 00-99 | handle     | 1.00          | 20            |
| 9   | 90 24 04 293 01 90 | hose       | 1.00          | 2             |
| 8   | 90 24 04 291 00 90 | insert     | 1.00          | 2             |
| 10  | 90 24 04 364 00 90 | adaptor    | 1.00          | 2             |
| 2   | 90 17 11 048 00-99 | aerator    | 1.00          | 20            |
| 6   | 90 30 01 220 00 90 | hose       | 1.00          | 2             |
| 7   | 90 24 04 293 00 90 | adaptor    | 1.00          | 2             |
| 4   | 90 17 87 179 01 90 | set        | 1.00          | 2             |
| 5   | 90 30 10 057 00 90 | fixing set | 1.00          | 2             |