








MADISON Three-hole basin mixer with pop-up waste - Brushed Dark Brass

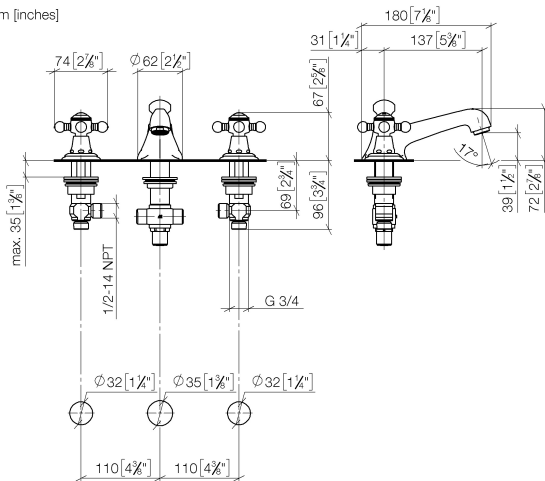
MADISON

20 700 360 Product version from 7/31/2009

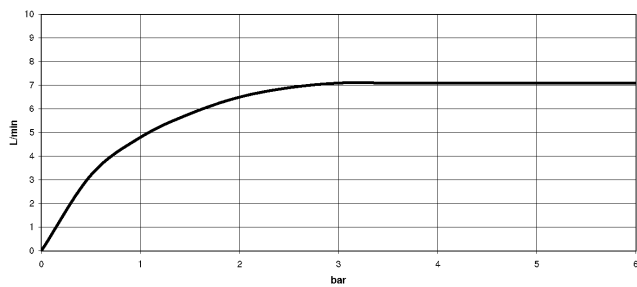


- 135mm projection
 - fixed spout
 - circular, air-enriched flow
 - height of mixer 72 mm
 - height up to aerator 40 mm
 - hole diameter valve 32 mm
 - hole diameter spout 35 mm
 - without rosette
 - 2x 1/2" x 1/2" high pressure hose
 - max. flow 7 l/min
 - lead-free
 - This product can help a building meet the requirements of Green Building Rating Systems, e.g. LEED®, BREEAM®, DGNB
 - WRAS
- Only suitable for basins with an overflow.

	Brushed Dark Brass	20 700 360-39
	Chrome	20 700 360-00
	Brushed Platinum	20 700 360-06
	Platinum	20 700 360-08
	Durabrass (23kt Gold)	20 700 360-09
	Brushed Durabrass (23kt Gold)	20 700 360-28
	Brushed Dark Platinum	20 700 360-99



Flow rate chart



Codes & Standards

DIN 4109	EN 200	Executive Order no. 1007	ISO 3822
Scottish Water Byelaws	UK Water Supply Regulations	Ü-Zeichen	VA-Zeichen



MADISON Three-hole basin mixer with pop-up waste - Brushed Dark Brass

MADISON

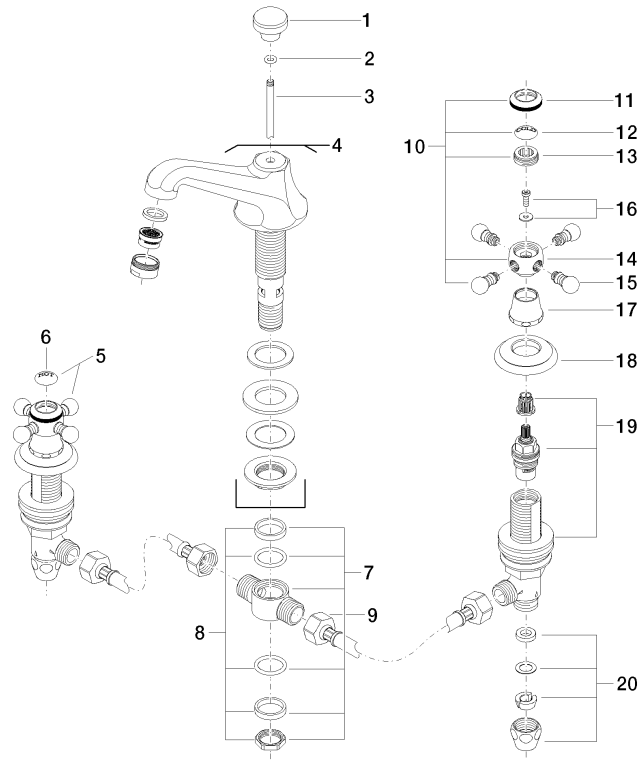
20 700 360 Product version from 7/31/2009

Certificates and sustainability

GDV_0400	ETA_17	LGA_8	WRAS_240602
----------	--------	-------	-------------

20 700 360 Product version from 7/31/2009

Parts for other
finishes can be found
here: [Chrome](#)



21 ————— Ablaufgarnitur 04.11.01.001.00.FP