




20 713 670

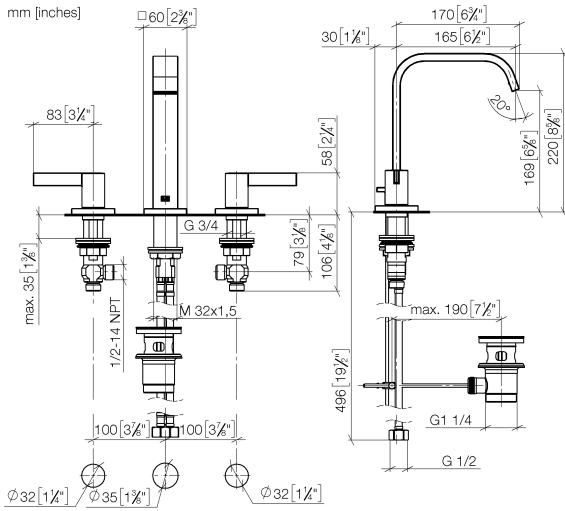


- 165mm projection
- fixed spout
- rectangular, air-enriched flow
- height of mixer 220 mm
- height up to aerator 170 mm
- hole diameter valve 32 mm
- hole diameter spout 35 mm
- rosette 60 x 60 mm
- 2x screw-in M 10 x 1 pressure hose, leak-tested
- max. flow 5 l/min
- lead-free
- WRAS 2212011
- This product can help a building meet the requirements of Green Building Rating Systems, e.g. LEED®, BREEAM®, DGNB

Only suitable for basins with an overflow.

	Brushed Chrome	20 713 670-93
	Chrome	20 713 670-00
	Brushed Platinum	20 713 670-06

20 713 670



Flow rate chart



Codes & Standards

DIN 4109

ISO 3822

Scottish Water
Byelaws

UK Water Supply
Regulations

Ü-Zeichen



IMO Three-hole basin mixer with pop-up waste - Brushed Chrome

IMO

20 713 670

Certificates

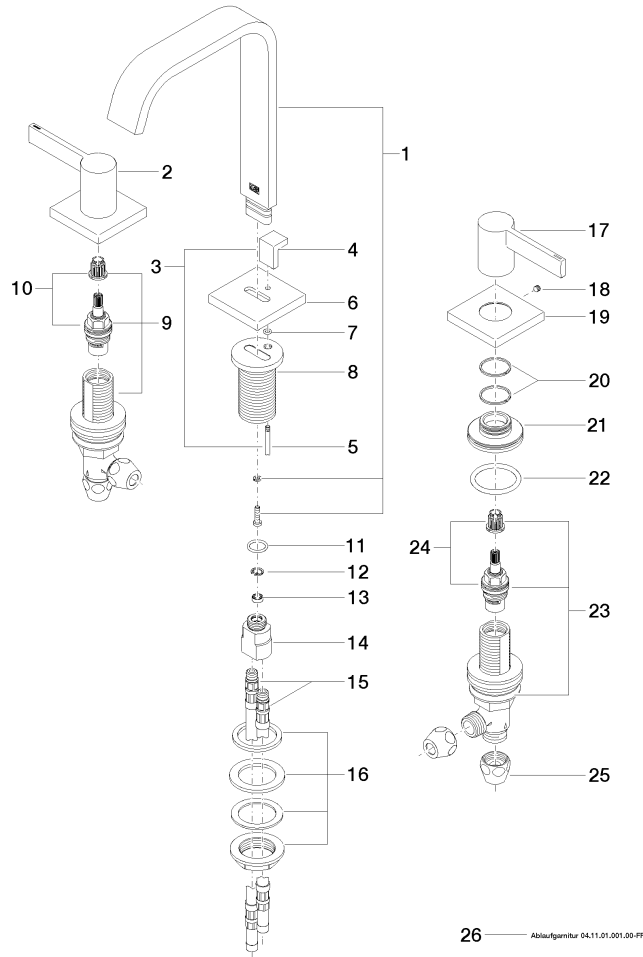
WRAS_2212

LGA_28

20 713 670

Product version from 4/1/2014

Parts for other finishes can be found here: [Chrome](#)





IMO Three-hole basin mixer with pop-up waste - Brushed Chrome

IMO

20 713 670

Spare parts list

Product version from 4/1/2014

No.	Item Number	Name	Quantity used	Delivery time
	90 28 22 267 00-93	spout	36	20