

## TARA Single-hole basin mixer with pop-up waste - Brushed Durabrass (23kt Gold)

TARA

22 302 892 Product version from 6/30/2009 to 5/27/2021



- 100mm projection
- pivotable spout 360°
- circular, air-enriched flow
- height of mixer 235 mm
- height up to aerator 134 mm
- hole diameter 35 mm
- rosette Ø 59 mm
- 2x screw-in M 10 x 1 pressure hose, leak-tested
- max. flow 7 l/min
- lead-free
- This product can help a building meet the requirements of Green Building Rating Systems, e.g. LEED®, BREEAM®, DGNB
- WRAS

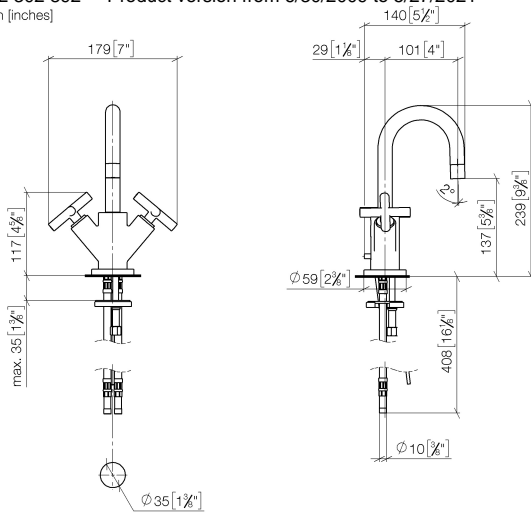
Only suitable for basins with an overflow.

	Brushed Durabrass (23kt Gold)	22 302 892-28
	Chrome	22 302 892-00
	Brushed Platinum	22 302 892-06
	Platinum	22 302 892-08
	Dark Chrome	22 302 892-19
	Matte Black	22 302 892-33
	Brushed Dark Brass	22 302 892-39
	Brushed Bronze	22 302 892-42
	Brushed Champagne (22kt Gold)	22 302 892-46
	Champagne (22kt Gold)	22 302 892-47
	Brushed Chrome	22 302 892-93
	Brushed Dark Platinum	22 302 892-99

# TARA Single-hole basin mixer with pop-up waste - Brushed Durabron (23kt Gold)

TARA

22 302 892 Product version from 6/30/2009 to 5/27/2021  
mm [inches]



Flow rate chart



## Codes & Standards

DIN 4109	EN 200	Executive Order no. 1007	ISO 3822
Scottish Water Byelaws	UK Water Supply Regulations	Ü-Zeichen	VA-Zeichen



TARA Single-hole basin mixer with pop-up waste - Brushed Durabrass (23kt Gold)

TARA

22 302 892    Product version from 6/30/2009 to 5/27/2021

Certificates and sustainability

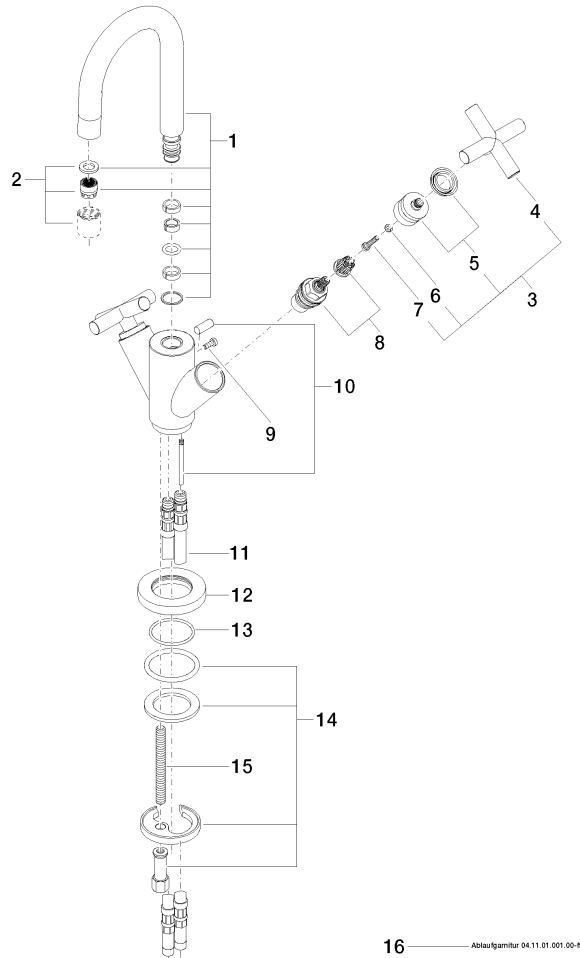
ETA_18	LGA_18	GDV_0400	WRAS_240702
--------	--------	----------	-------------

# TARA Single-hole basin mixer with pop-up waste - Brushed Durabron (23kt Gold)

TARA

22 302 892 Product version from 6/30/2009 to 5/27/2021

Parts for other  
finishes can be found  
here: Chrome



16 Abbaufamilie 04.11.01.001.00-ff

## Spare parts list

No.	Item Number	Name	Quantity used	Delivery time
2	90 23 01 028 03-28	aerator	1.00	20
11	04 30 04 016 00 90	hose	2.00	60
4	09 20 89 010-28	handle	2.00	60
13	09 14 10 134 90	seal	1.00	2
5	90 12 12 007 00-28	base	2.00	20
12	09 28 10 132-28	ring	1.00	20
1	90 28 22 215 01-28	spout	1.00	20
14	04 30 11 038 00 90	fixing set	1.00	2
9	09 30 30 054 90	screw	1.00	2
15	09 31 11 011 90	pin	1.00	2
10	04 20 89 035 80-28	pull-rod	1.00	20
8	90 90 03 151 00 90	top	2.00	2
16	90 11 01 001 00-28	pop-up waste	1.00	20
3	90 20 89 010 10-28	handle	2.00	20
6	90 30 11 029 00 90	disc	2.00	2
7	90 30 30 075 00 90	screw	2.00	2