

**Body spray without volume control FlowReduce - Brushed Platinum**

IMO

28 518 782



Fits: IMO, MEM, CL.1, CYO

- spray head Ø 55mm
- ball-joint pivotable through 25° (in any direction)
- rain flow
- anti-scale system
- rosette 60 x 60 mm
- 1/2" connection
- max. flow 5 l/min
- WRAS 1809018
- This product can help a building meet the requirements of Green Building Rating Systems, e.g. LEED®, BREEAM®, DGNB

|  |                               |               |
|--|-------------------------------|---------------|
|    | Brushed Platinum              | 28 518 782-06 |
|    | Chrome                        | 28 518 782-00 |
|    | Platinum                      | 28 518 782-08 |
|    | Dark Chrome                   | 28 518 782-19 |
|    | Brushed Light Gold            | 28 518 782-27 |
|    | Brushed Durabross (23kt Gold) | 28 518 782-28 |
|    | Matte Black                   | 28 518 782-33 |
|    | Brushed Champagne (22kt Gold) | 28 518 782-46 |
|   | Champagne (22kt Gold)         | 28 518 782-47 |
|  | Brushed Chrome                | 28 518 782-93 |
|  | Brushed Dark Platinum         | 28 518 782-99 |

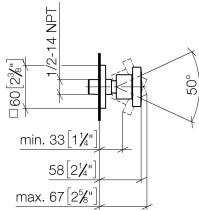
**Recommended miscellaneous**



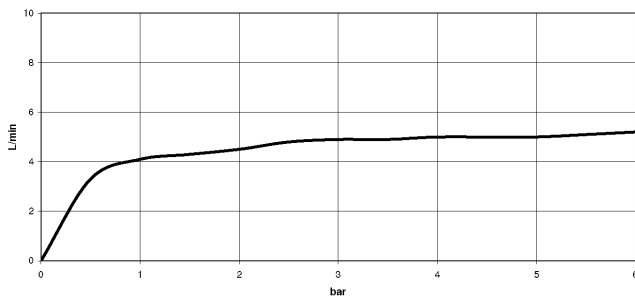
- Concealed wall elbow -** 35 085 970 90
- max. recess depth 163 mm
  - min. recess depth 90 mm

28 518 782

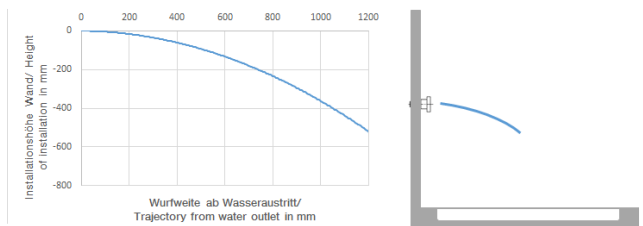
mm [inches]



Flow rate chart



Trajectory diagram



Codes & Standards

ASME A112.18.1

cUPC

DIN 4109

ISO 3822

Scottish Water  
Byelaws

UK Water Supply  
Regulations

Ü-Zeichen



Body spray without volume control FlowReduce - Brushed Platinum

IMO

28 518 782

Certificates

LGA\_38

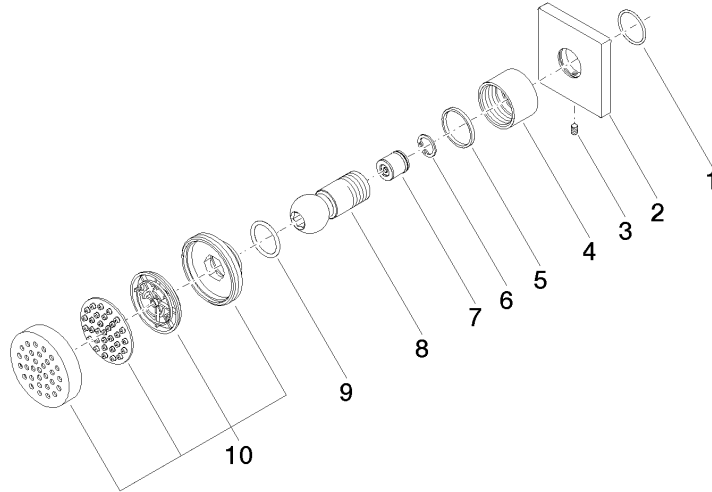
IAPMO\_4976

WRAS\_1809

WRAS\_240602

28 518 782

Product version from 3/10/2014





Body spray without volume control FlowReduce - Brushed Platinum

IMO

28 518 782

**Spare parts list**

**Product version from 3/10/2014**

| No. | Item Number     | Name | Quantity used | Delivery time |
|-----|-----------------|------|---------------|---------------|
|     | 09 14 10 098 90 | seal | 10            | 2             |