

LULU Single-lever basin mixer with pop-up waste - Brushed Platinum

LULU



33 500 710

Product version from 3/31/2009 to 5/15/2020



- 155mm projection
- fixed spout
- circular, air-enriched flow
- height of mixer 113 mm
- height up to aerator 90 mm
- hole diameter 35 mm
- 2x screw-in M 8 x 1 pressure hose, leak-tested
- max. flow 7 l/min
- lead-free
- WRAS
- This product can help a building meet the requirements of Green Building Rating Systems, e.g. LEED®, BREEAM®, DGNB

Only suitable for basins with an overflow.

|   |                  |               |
|---|------------------|---------------|
|  | Brushed Platinum | 33 500 710-06 |
|  | Chrome           | 33 500 710-00 |

33 500 710 Product version from 3/31/2009 to 5/15/2020

mm [inches]



**Flow rate chart**



**Codes & Standards**

DIN 4109

EN 817

Executive Order  
no. 1007

ISO 3822

Scottish Water  
Byelaws

UK Water Supply  
Regulations

Ü-Zeichen

VA-Zeichen



LULU Single-lever basin mixer with pop-up waste - Brushed Platinum

LULU

33 500 710    Product version from 3/31/2009 to 5/15/2020

Certificates and sustainability

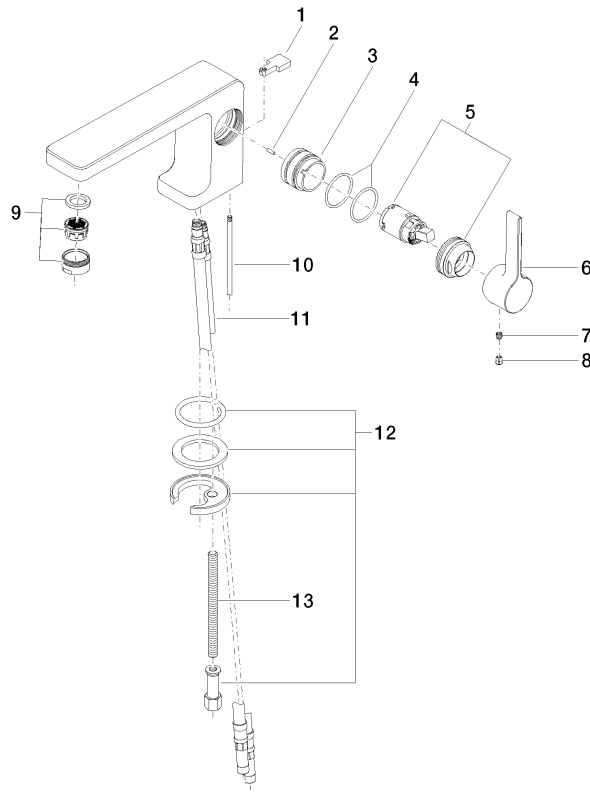
|       |           |        |          |
|-------|-----------|--------|----------|
| LGA_9 | WRAS_2001 | ETA_18 | GDV_0400 |
|-------|-----------|--------|----------|

## LULU Single-lever basin mixer with pop-up waste - Brushed Platinum

LULU

33 500 710 Product version from 3/31/2009 to 5/15/2020

Parts for other  
finishes can be found  
here: [Chrome](#)



14 Ablaufgarnitur 04.11.01.001.00-#

### Spare parts list

| No. | Item Number           | Name         | Quantity used | Delivery time |
|-----|-----------------------|--------------|---------------|---------------|
|     | 3 09 18 40 095 10 90  | sleeve       | 1.00          | 2             |
|     | 4 09 14 10 137 90     | seal         | 2.00          | 2             |
|     | 6 09 20 71 040-06     | handle       | 1.00          | 10            |
|     | 9 90 23 01 118 01-06  | aerator      | 1.00          | 10            |
|     | 1 09 20 71 030-06     | handle       | 1.00          | 10            |
|     | 11 04 30 04 018 00 90 | hose         | 2.00          | 60            |
|     | 2 09 31 11 111 90     | pin          | 1.00          | 2             |
|     | 13 09 31 11 012 90    | pin          | 1.00          | 2             |
|     | 12 04 30 11 038 75 90 | fixing set   | 1.00          | 2             |
|     | 5 90 15 05 041 00-06  | cartridge    | 1.00          | 10            |
|     | 8 09 31 20 017 90     | plug         | 1.00          | 2             |
|     | 10 09 31 09 080-06    | pull-rod     | 1.00          | 10            |
|     | 14 90 11 01 001 00-06 | pop-up waste | 1.00          | 10            |
|     | 7 90 31 11 030 00 90  | pin          | 1.00          | 2             |