



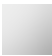

DORNBRACHT YAMOU Single-lever basin mixer with raised base without pop-up waste - Chrome

DORNBRACHT YAMOU

33 537 831    Product version from 1/1/2023



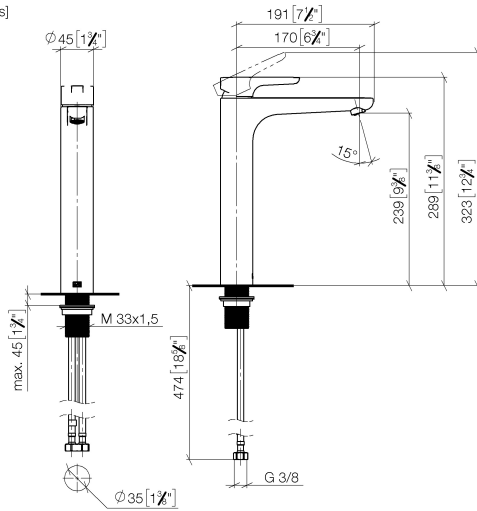
- 180mm projection
- fixed spout
- circular, air-enriched flow
- height of mixer 288 mm
- height up to aerator 239 mm
- hole diameter 35 mm
- 2x screw-in M 8 x 1 pressure hose, leak-tested
- max. flow 6.8 l/min
- WRAS

	Chrome	33 537 831-00
	Soft Black	33 537 831-69

# DORNBRAUCHT YAMOU Single-lever basin mixer with raised base without pop-up waste - Chrome

DORNBRAUCHT  
YAMOU

33 537 831 Product version from 1/1/2023  
mm [inches]



Flow rate chart



## Codes & Standards

DIN 4109	EN 817	ISO 3822	Scottish Water Byelaws
UK Water Supply Regulations	Ü-Zeichen	XP P 41-280	



DORNBACHT YAMOU Single-lever basin mixer with raised base without pop-up waste - Chrome

DORNBACHT  
YAMOU

33 537 831    Product version from 1/1/2023

Certificates and sustainability

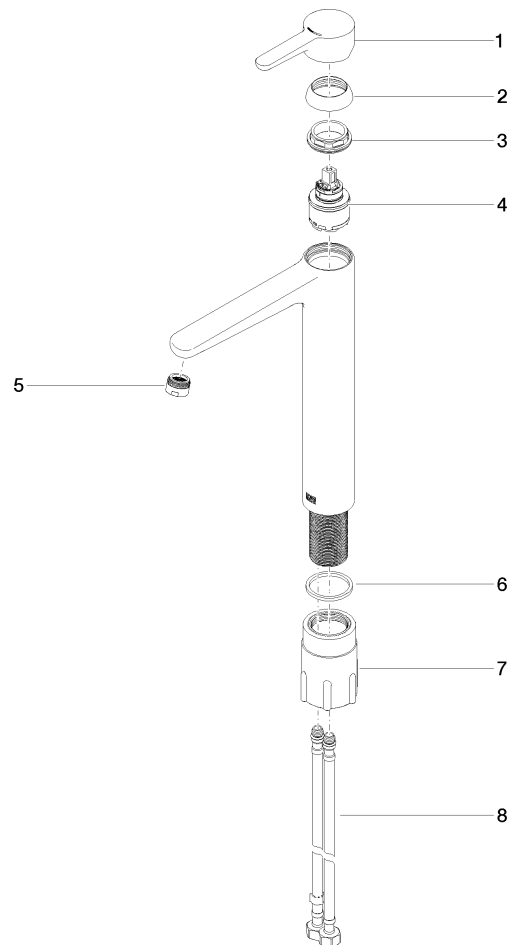
AbP_10	ACS_23 ACC NY	WRAS_240104	DVGW_DW-6506DO0
--------	---------------	-------------	-----------------

## DORNBRAUCHT YAMOU Single-lever basin mixer with raised base without pop-up waste - Chrome

DORNBRAUCHT  
YAMOU

33 537 831 Product version from 1/1/2023

Parts for other  
finishes can be found  
here: [Soft Black](#)



### Spare parts list

No.	Item Number	Name	Quantity used	Delivery time
3	90 23 10 140 00 90	nut	1.00	2
7	90 30 11 505 00 90	fixing set	1.00	2
4	90 15 05 502 00 90	cartridge	1.00	2
1	90 20 83 002 00-00	handle	1.00	2
2	90 21 02 400 00-00	cover	1.00	2
8	90 30 04 115 00 90	hose	1.00	2
5	90 23 01 177 00-00	aerator	1.00	2
6	90 14 05 082 00 90	seal	1.00	2