

LISSE Single-lever basin mixer with raised base without pop-up waste - Matte Black



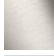




LISSE

33 537 845 Product version from 3/9/2016 to 10/31/2018



- 215mm projection
- fixed spout
- circular, air-enriched flow
- height of mixer 292 mm
- height up to aerator 241 mm
- hole diameter 35 mm
- 2x screw-in M 8 x 1 pressure hose, leak-tested
- max. flow 5.7 l/min
- lead-free
- This product can help a building meet the requirements of Green Building Rating Systems, e.g. LEED®, BREEAM®, DGNB
- WRAS

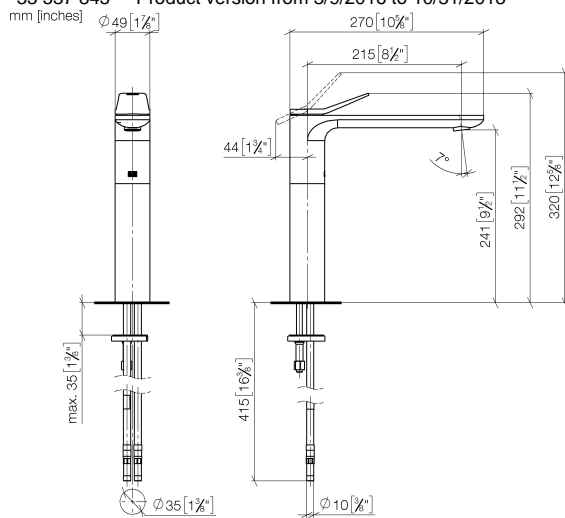
for use on countertop bowls

| | | |
|---|-----------------------|---------------|
|  | Matte Black | 33 537 845-33 |
|  | Chrome | 33 537 845-00 |
|  | Brushed Platinum | 33 537 845-06 |
|  | Dark Chrome | 33 537 845-19 |
|  | Brushed Light Gold | 33 537 845-27 |
|  | Brushed Chrome | 33 537 845-93 |
|  | Brushed Dark Platinum | 33 537 845-99 |

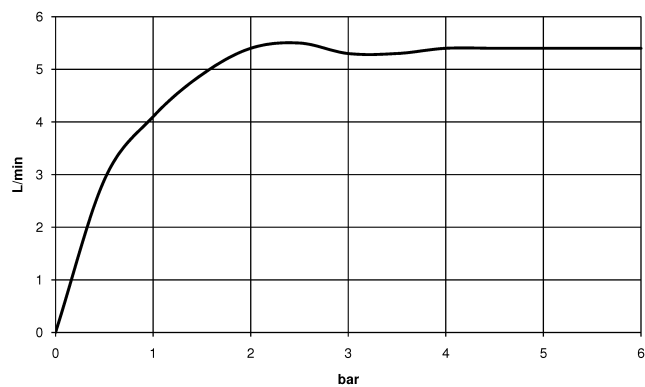
LISSÉ Single-lever basin mixer with raised base without pop-up waste - Matte Black

LISSÉ

33 537 845 Product version from 3/9/2016 to 10/31/2018



Flow rate chart



Codes & Standards

DIN 4109

Executive Order
no. 1007

ISO 3822

Scottish Water
Byelaws

UK Water Supply
Regulations

Ü-Zeichen



LISSE Single-lever basin mixer with raised base without pop-up waste - Matte Black

LISSE

33 537 845 Product version from 3/9/2016 to 10/31/2018

Certificates and sustainability

LGA_29

GDV_0400

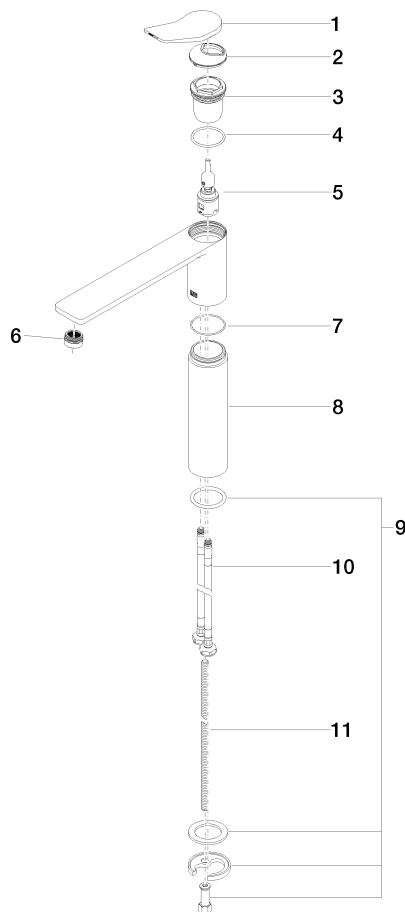
WRAS_250402

LISSE Single-lever basin mixer with raised base without pop-up waste - Matte Black

LISSE

33 537 845 Product version from 3/9/2016 to 10/31/2018

Parts for other
finishes can be found
here: [Chrome](#)



Spare parts list

| No. | Item Number | Name | Quantity used | Delivery time |
|-----|--------------------|------------|---------------|---------------|
| 3 | 09 23 10 123 90 | nut | 1.00 | 2 |
| 8 | 09 28 22 306-33 | sleeve | 1.00 | 30 |
| 7 | 09 14 10 108 90 | seal | 1.00 | 2 |
| 6 | 90 23 01 161 01-33 | aerator | 1.00 | 30 |
| 1 | 90 20 84 020 00-33 | handle | 1.00 | 30 |
| 5 | 90 15 05 042 01 90 | cartridge | 1.00 | 2 |
| 2 | 09 28 30 034 90 | cover | 1.00 | 2 |
| 10 | 04 30 04 101 00 90 | hose | 2.00 | 2 |
| 4 | 09 14 10 038 90 | seal | 1.00 | 2 |
| 9 | 04 30 11 038 75 90 | fixing set | 1.00 | 2 |
| 11 | 09 31 11 095 90 | pin | 1.00 | 2 |