

## TARA ULTRA BAR TAP Single-lever mixer - Matte Black

TARA ULTRA

33 805 875 Product version from 5/3/2021



- 166mm projection
- gauge mm
- pivotable spout 360°
- laminar flow
- height of mixer 303 mm
- height up to laminar flow regulator 186 mm
- hole diameter 35 mm
- max. flow 8 l/min at 3 bar flow pressure
- lead-free
- This product can help a building meet the requirements of Green Building Rating Systems, e.g. LEED®, BREEAM®, DGNB

	Matte Black	33 805 875-33
	Chrome	33 805 875-00
	Brushed Platinum	33 805 875-06
	Platinum	33 805 875-08
	Durabrass (23kt Gold)	33 805 875-09
	Dark Chrome	33 805 875-19
	Brushed Durabrass (23kt Gold)	33 805 875-28
	Brushed Bronze	33 805 875-42
	Brushed Champagne (22kt Gold)	33 805 875-46
	Champagne (22kt Gold)	33 805 875-47
	Brushed Chrome	33 805 875-93
	Brushed Dark Platinum	33 805 875-99

### Recommended miscellaneous

**Strainer waste with control handle - Matte Black** 10 712 970-33

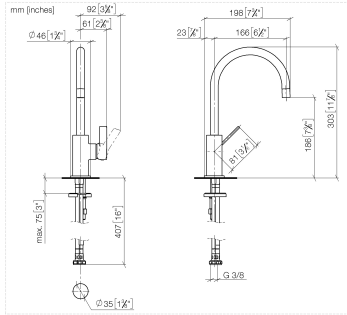


### Recommended miscellaneous

**Dispenser without rosette - Matte Black** 82 424 970-33



33 805 875 Product version from 5/3/2021



### Flow rate chart



## Codes & Standards

DIN 4109

ISO 3822

## Ü-Zeichen



## TARA ULTRA BAR TAP Single-lever mixer - Matte Black

TARA ULTRA

33 805 875 Product version from 5/3/2021

Certificates and sustainability

LGA\_18

33 805 875 Product version from 5/3/2021

Parts for other  
finishes can be found  
here: [Chrome](#)

