

ELIO Single-lever mixer Pull-out - Brushed Platinum

ELIO

33 840 790



- 235mm projection
- pivotable spout 360°
- air-enriched flow
- height of mixer 337 mm
- height up to aerator 300 mm
- hole diameter 35 mm
- fabric braided hose 1500 mm
- max. flow 8.8 l/min at 3 bar flow pressure
- lead-free
- This product can help a building meet the requirements of Green Building Rating Systems, e.g. LEED®, BREEAM®, DGNB

Intrinsic protection against back flow.

	Brushed Platinum	33 840 790-06
	Chrome	33 840 790-00
	Platinum	33 840 790-08
	Dark Chrome	33 840 790-19
	Brushed Durabronze (23kt Gold)	33 840 790-28
	Brushed Champagne (22kt Gold)	33 840 790-46
	Champagne (22kt Gold)	33 840 790-47
	Brushed Chrome	33 840 790-93
	Brushed Dark Platinum	33 840 790-99

Recommended miscellaneous

Strainer waste with control handle - Brushed Platinum 10 712 970-06

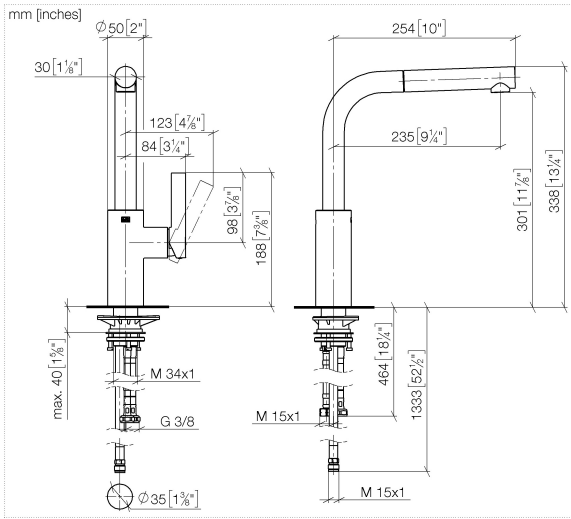


Recommended miscellaneous

Dispenser without rosette - Brushed Platinum 82 424 970-06



33 840 790



Flow rate chart



Codes & Standards

DIN 4109

EN 1717

Executive Order
no. 1007

ISO 3822

Ü-Zeichen



ELIO Single-lever mixer Pull-out - Brushed Platinum

ELIO

33 840 790

Certificates

Belgaqua_22_277_2 LGA_19

GDV_0400

33 840 790

Product version up to 12/31/2013

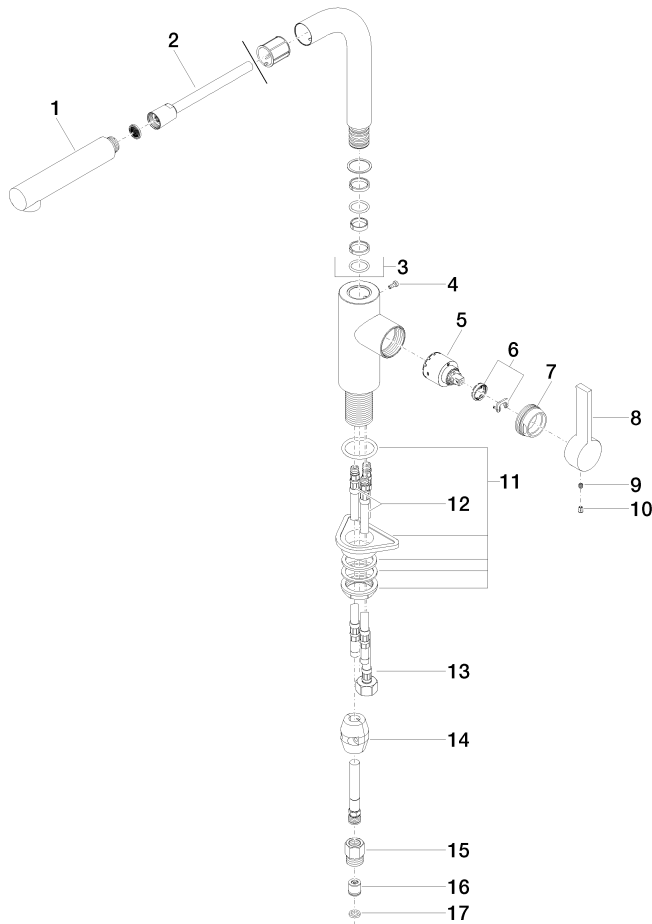
Product version from 12/31/2013 to 5/15/2020

Product version from 5/15/2020 to 5/5/2021

Product version from 5/5/2021 to 6/1/2022

Product version from 6/1/2022

Parts for other finishes can be found here: [Chrome](#)





ELIO Single-lever mixer Pull-out - Brushed Platinum

ELIO

33 840 790

Spare parts list

Product version up to 12/31/2013

Product version from 12/31/2013 to 5/15/2020

Product version from 5/15/2020 to 5/5/2021

Product version from 5/5/2021 to 6/1/2022

Product version from 6/1/2022

No.	Item Number	Name	Quantity used	Delivery time
	04 12 11 106 00-06	shower	18	10