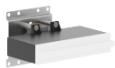


Concealed wall installation box -

SERIES-VARIOUS

35 206 970 90

- female thread 1/2" connection
- dust cover
- anti-water packing
- WRAS



Recommended miscellaneous

xGRID Attachment set for integrating in the dry wall construction -

12 340 970 90

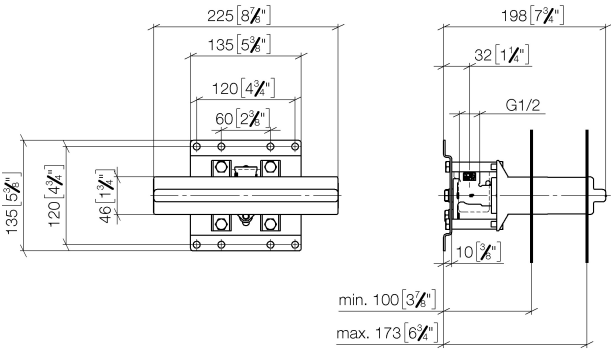
Required miscellaneous

xGRID Installation track 555 mm -

12 360 970 90

35 206 970 90

mm [inches]

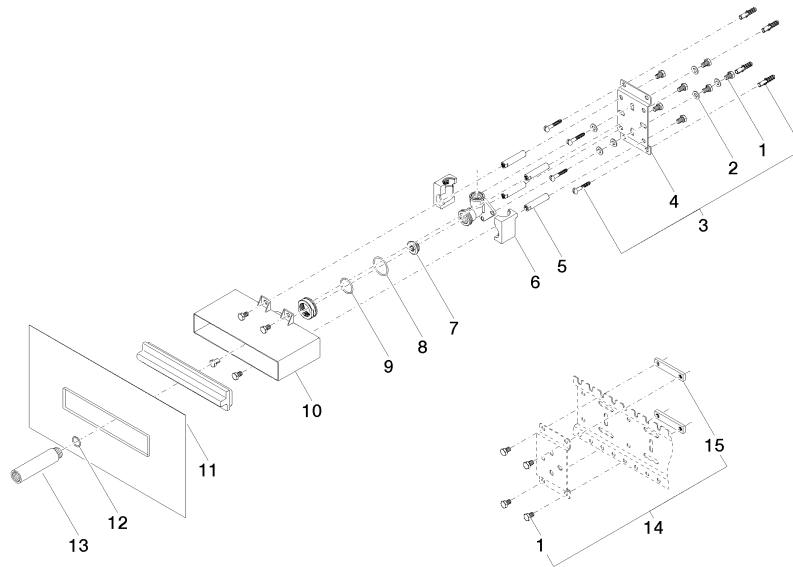


Codes & Standards			
DIN 4109	ISO 3822	Scottish Water Byelaws	UK Water Supply Regulations

Ü-Zeichen

Certificates and sustainability	
WRAS_2106	LGA_19

35 206 970 90



Spare parts list

No.	Item Number	Name	Quantity used	Delivery time
9	09 14 10 118 90	seal	1.00	2
7	04 31 20 006 00 90	plug	1.00	2
14	04 17 20 100 00 90	fixing set	1.00	2
10	09 11 11 053 90	accessories	1.00	60
13	09 24 03 169 10 90	adaptor	1.00	2
11	04 14 03 126 00 90	gasket kit	1.00	2
15	09 17 20 100 90	holder	2.00	60
2	09 30 11 139 90	disc	6.00	2
8	09 14 10 149 90	seal	1.00	2
5	09 18 40 138 90	sleeve	1.00	60
6	09 11 11 036 90	accessories	1.00	2
4	09 17 20 094 90	holder	1.00	2
3	04 30 31 024 01 90	fixing set	2.00	2
1	09 30 30 152 90	screw	15.00	2
12	90 14 10 010 00 90	seal	1.00	2