

Concealed single-lever mixer with cover plate - Brushed Durabron (23kt Gold) SERIES SPECIFIC

36 060 670 Product version from 6/1/2024



- cover plate 80 x 80 mm
- WRAS

	Brushed Durabron (23kt Gold)	36 060 670-28
	Chrome	36 060 670-00
	Brushed Platinum	36 060 670-06
	Platinum	36 060 670-08
	Dark Chrome	36 060 670-19
	Brushed Light Gold	36 060 670-27
	Matte Black	36 060 670-33
	Brushed Dark Brass	36 060 670-39
	Brushed Champagne (22kt Gold)	36 060 670-46
	Champagne (22kt Gold)	36 060 670-47
	Brushed Chrome	36 060 670-93
	Brushed Dark Platinum	36 060 670-99

Required miscellaneous



- Concealed wall-mounted single-lever mixer -** 35 860 970 90
- max. recess depth 95 mm
  - min. recess depth 80 mm

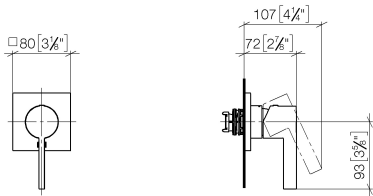
Concealed single-lever mixer with cover plate - Brushed Durabron (23kt Gold)

SERIES SPECIFIC

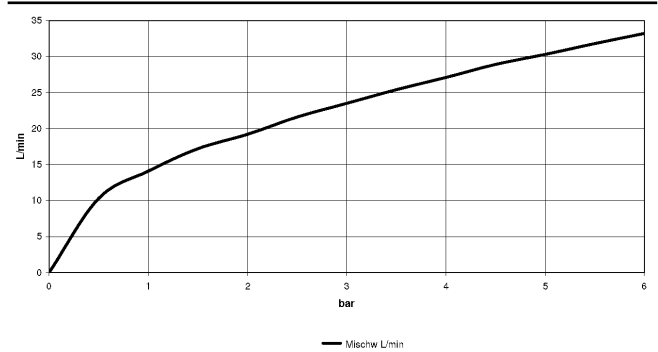
36 060 670

Product version from 6/1/2024

mm [inches]



Flow rate chart



Codes & Standards

DIN 4109	ISO 3822	Scottish Water Byelaws	UK Water Supply Regulations
----------	----------	------------------------	-----------------------------

Ü-Zeichen



## Concealed single-lever mixer with cover plate - Brushed Durabronz (23kt Gold) SERIES SPECIFIC

---

36 060 670 Product version from 6/1/2024

### Certificates and sustainability

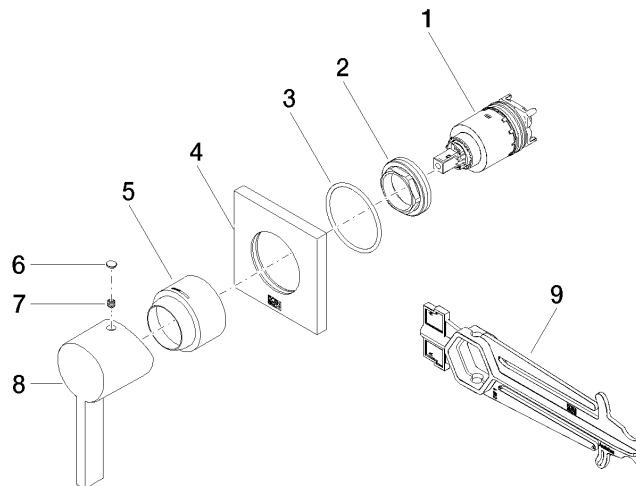
---

WRAS\_2107

LGA\_29

## Concealed single-lever mixer with cover plate - Brushed Durabronz (23kt Gold) SERIES SPECIFIC

36 060 670 Product version from 6/1/2024



### Spare parts list

No.	Item Number	Name	Quantity used	Delivery time
1	90 15 05 064 01 90	cartridge	1.00	2
5	09 11 02 530-28	cover	1.00	20
8	09 20 67 004-28	handle	1.00	20
4	09 27 78 048-28	rosette	1.00	20
6	90 31 20 087 00-28	plug	1.00	20
2	09 24 04 105 90	nut	1.00	2
3	90 14 10 049 00 90	seal	1.00	2
9	90 30 09 064 00 90	key	1.00	2
7	90 31 11 112 00 90	pin	1.00	2