

Concealed single-lever mixer with cover plate - Matte Black

SERIES SPECIFIC

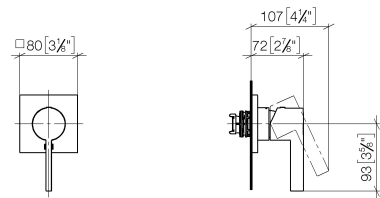
36 060 670 Product version from 6/1/2024



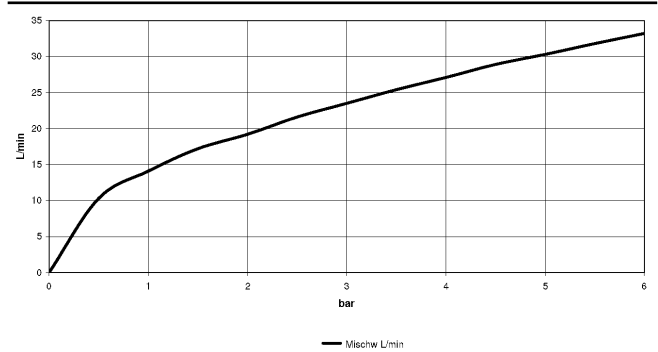
- cover plate 80 x 80 mm
- WRAS

	Matte Black	36 060 670-33
	Chrome	36 060 670-00
	Brushed Platinum	36 060 670-06
	Platinum	36 060 670-08
	Dark Chrome	36 060 670-19
	Brushed Light Gold	36 060 670-27
	Brushed Durabrass (23kt Gold)	36 060 670-28
	Brushed Dark Brass	36 060 670-39
	Brushed Champagne (22kt Gold)	36 060 670-46
	Champagne (22kt Gold)	36 060 670-47
	Brushed Chrome	36 060 670-93
	Brushed Dark Platinum	36 060 670-99

mm [inches]



Flow rate chart



Codes & Standards

DIN 4109	ISO 3822	Ü-Zeichen
----------	----------	-----------



Concealed single-lever mixer with cover plate - Matte Black

SERIES SPECIFIC

36 060 670 Product version from 6/1/2024

Certificates and sustainability

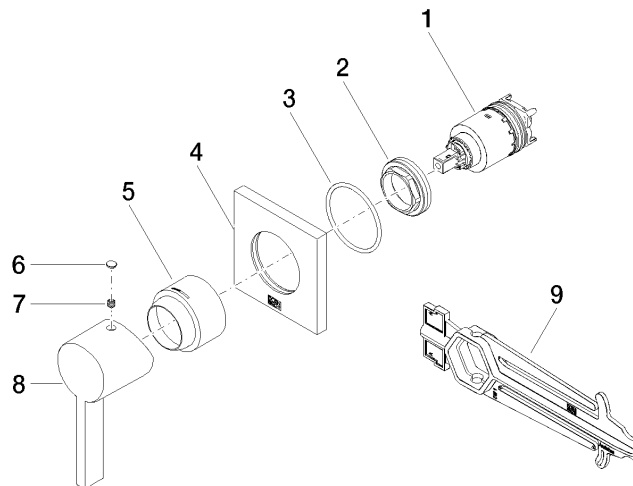
LGA_29

Concealed single-lever mixer with cover plate - Matte Black

SERIES SPECIFIC

36 060 670 Product version from 6/1/2024

Parts for other
finishes can be found
here: [Chrome](#)



Spare parts list

No.	Item Number	Name	Quantity used	Delivery time
1	90 15 05 064 01 90	cartridge	1.00	2
5	09 11 02 530-33	cover	1.00	60
7	90 31 11 112 00 90	pin	1.00	2
8	09 20 67 004-33	handle	1.00	60
4	09 27 78 048-33	rosette	1.00	60
9	90 30 09 064 00 90	key	1.00	2
3	90 14 10 049 00 90	seal	1.00	2
2	09 24 04 105 90	nut	1.00	2
6	90 31 20 087 00-33	plug	1.00	30