



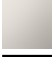




MADISON Concealed two-way diverter - Chrome

MADISON

36 200 361    Product version from 4/1/2022



- rotary diverter
- rosette Ø 60 mm
- NEUTRAL porcelain insert
- WRAS

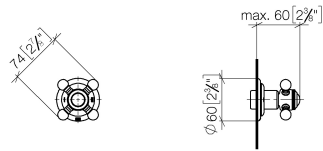
	Chrome	36 200 361-00
	Brushed Platinum	36 200 361-06
	Platinum	36 200 361-08
	Durabrand (23kt Gold)	36 200 361-09
	Brushed Durabrand (23kt Gold)	36 200 361-28
	Brushed Dark Brass	36 200 361-39
	Brushed Dark Platinum	36 200 361-99

Required miscellaneous

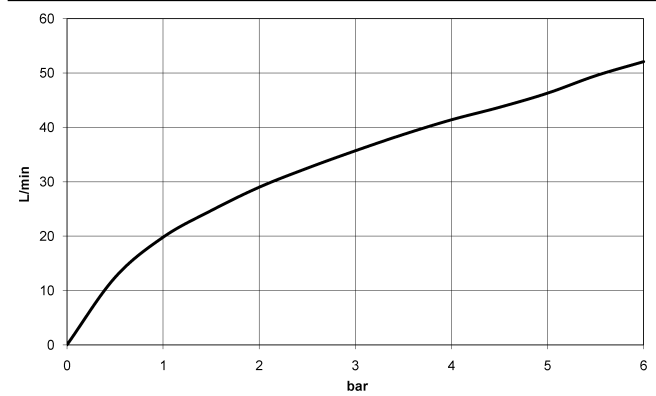


- Concealed two-way diverter -**    35 202 970 90
- min. recess depth 85 mm
  - max. recess depth 155 mm

mm [inches]



Flow rate chart



### Codes & Standards

DIN 4109

ISO 3822

Scottish Water  
Byelaws

UK Water Supply  
Regulations

Ü-Zeichen



MADISON Concealed two-way diverter - Chrome

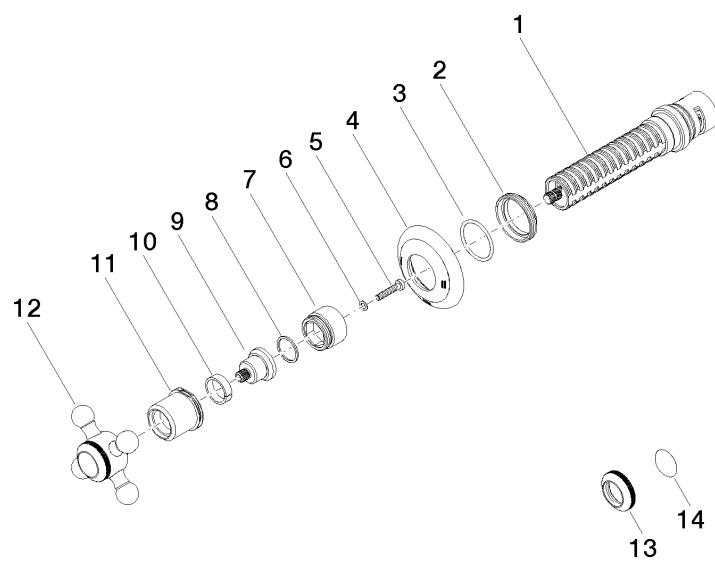
MADISON

36 200 361 Product version from 4/1/2022

Certificates and sustainability

LGA\_38

WRAS\_2307



**Spare parts list**

No.	Item Number	Name	Quantity used	Delivery time
11	09 21 02 161-00	cover	1.00	10
4	09 27 36 105-00	rosette	1.00	10
1	90 90 03 304 10 90	diverter	1.00	2
9	09 12 12 064-00	base	1.00	10
7	09 18 30 007-00	sleeve	1.00	10
2	09 23 10 125-00	nut	1.00	10
12	04 20 36 100 02-00	handle	1.00	10
13	09 20 36 005-00	handle	1.00	10
14	09 26 01 016 90	accessories	1.00	2
6	09 30 11 194 90	disc	1.00	2
10	90 14 15 021 00 90	ring	1.00	2
5	90 30 30 075 00 90	screw	1.00	2
3	90 14 10 063 00 90	seal	1.00	2
8	90 28 10 030 00 90	ring	1.00	2