








MADISON Concealed two-way diverter - Brushed Platinum

MADISON

36 200 361    Product version from 4/1/2022



- rotary diverter
- rosette Ø 60 mm
- NEUTRAL porcelain insert
- WRAS

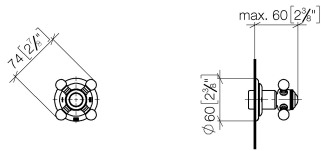
|   |                               |               |
|---|-------------------------------|---------------|
|  | Brushed Platinum              | 36 200 361-06 |
|  | Chrome                        | 36 200 361-00 |
|  | Platinum                      | 36 200 361-08 |
|  | Durabrand (23kt Gold)         | 36 200 361-09 |
|  | Brushed Durabrand (23kt Gold) | 36 200 361-28 |
|  | Brushed Dark Brass            | 36 200 361-39 |
|  | Brushed Dark Platinum         | 36 200 361-99 |

Required miscellaneous

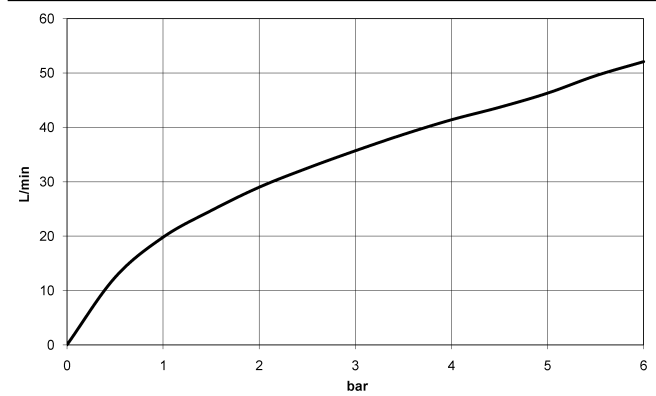


- |                                     |               |
|-------------------------------------|---------------|
| <b>Concealed two-way diverter -</b> | 35 202 970 90 |
| •min. recess depth 85 mm            |               |
| •max. recess depth 155 mm           |               |

mm [inches]



**Flow rate chart**



**Codes & Standards**

|          |          |                           |                                |
|----------|----------|---------------------------|--------------------------------|
| DIN 4109 | ISO 3822 | Scottish Water<br>Byelaws | UK Water Supply<br>Regulations |
|----------|----------|---------------------------|--------------------------------|

Ü-Zeichen



## MADISON Concealed two-way diverter - Brushed Platinum

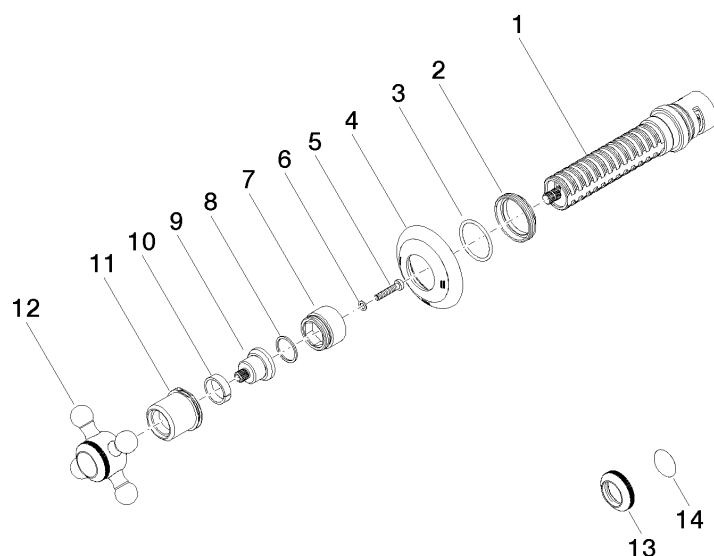
MADISON

36 200 361 Product version from 4/1/2022

Certificates and sustainability

LGA\_38

WRAS\_2307



## Spare parts list

| No.  | Item Number        | Name        | Quantity used | Delivery time |
|--|--------------------|-------------|---------------|---------------|
| 2  | 09 23 10 125-00    | nut         | 1.00          | 10            |
| 12   | 04 20 36 100 02-06 | handle      | 1.00          | 10            |
| 4  | 09 27 36 105-06    | rosette     | 1.00          | 60            |
| 11   | 09 21 02 161-06    | cover       | 1.00          | 10            |
| 14   | 09 26 01 016 90    | accessories | 1.00          | 2             |
| 1  | 90 90 03 304 10 90 | diverter    | 1.00          | 2             |
| 6  | 09 30 11 194 90    | disc        | 1.00          | 2             |
| 7  | 09 18 30 007-06    | sleeve      | 1.00          | -             |
| Spare part can no longer be ordered, please order the replacement item |                    |             |               |               |
| 9  | 09 12 12 064-06    | base        | 1.00          | -             |
| Spare part can no longer be ordered, please order the replacement item |                    |             |               |               |
| 13   | 09 20 36 005-06    | handle      | 1.00          | 10            |
| 3  | 90 14 10 063 00 90 | seal        | 1.00          | 2             |
| 8  | 90 28 10 030 00 90 | ring        | 1.00          | 2             |
| 10   | 90 14 15 021 00 90 | ring        | 1.00          | 2             |
| 5  | 90 30 30 075 00 90 | screw       | 1.00          | 2             |