

Concealed two-way diverter - Light Gold

SERIES SPECIFIC

36 200 740 Product version from 4/1/2022



- rotary diverter
- without rosette
- handle Ø 60mm
- WRAS

	Light Gold	36 200 740-26
	Chrome	36 200 740-00
	Brushed Platinum	36 200 740-06
	Brushed Light Gold	36 200 740-27
	Brushed Durabrass (23kt Gold)	36 200 740-28
	Matte Black	36 200 740-33
	Brushed Dark Brass	36 200 740-39
	Brushed Bronze	36 200 740-42
	Brushed Champagne (22kt Gold)	36 200 740-46
	Champagne (22kt Gold)	36 200 740-47
	Brushed Dark Platinum	36 200 740-99

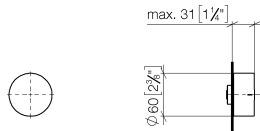
Required miscellaneous

- Concealed two-way diverter -** 35 202 970 90
- min. recess depth 95 mm
 - max. recess depth 116 mm

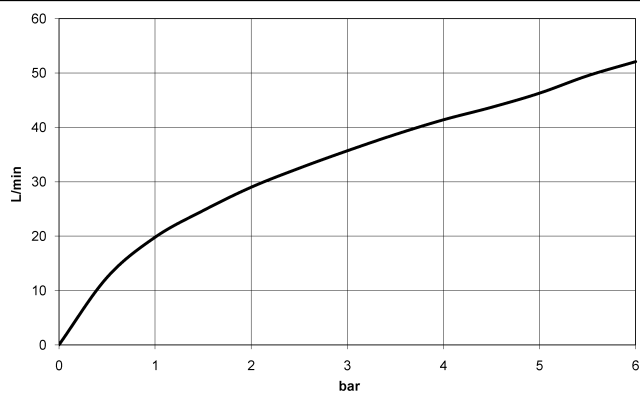


36 200 740 Product version from 4/1/2022

mm [inches]



Flow rate chart



Codes & Standards

DIN 4109

ISO 3822

Scottish Water
Byelaws

UK Water Supply
Regulations

Ü-Zeichen



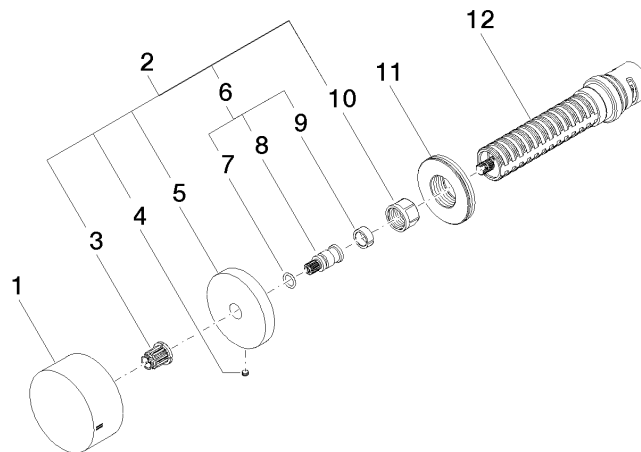
Concealed two-way diverter - Light Gold

SERIES SPECIFIC

36 200 740 Product version from 4/1/2022

Certificates and sustainability

LGA_38 WRAS_2307



Spare parts list

No.	Item Number	Name	Quantity used	Delivery time
11	09 30 01 107 90	sleeve	1.00	2
1	09 20 74 044-26	handle	1.00	60
8	09 29 06 020-26	spindle	1.00	-
Spare part can no longer be ordered, please order the replacement item				
9	90 14 15 020 03 90	ring	1.00	2
3	90 12 12 002 00 90	fixing cap	1.00	2
12	90 90 03 304 10 90	diverter	1.00	2
4	09 31 11 055 90	pin	1.00	2
7	90 14 10 060 00 90	seal	1.00	2
6	04 29 06 020 00-00	spindle	1.00	10
5	09 27 74 004-26	rosette	1.00	60
2	04 27 74 004 00-26	rosette	1.00	60
10	90 23 30 023 00 90	nut	1.00	2