

SYMETRICS Concealed two-way diverter - Brushed Platinum

SYMETRICS


36 200 985
Product version from 4/1/2022



- rotary diverter
- rosette 60 x 60 mm
- WRAS

	Brushed Platinum	36 200 985-06
	Chrome	36 200 985-00
	Dark Chrome	36 200 985-19
	Brushed Light Gold	36 200 985-27
	Brushed Durabrass (23kt Gold)	36 200 985-28
	Matte Black	36 200 985-33
	Brushed Champagne (22kt Gold)	36 200 985-46
	Champagne (22kt Gold)	36 200 985-47
	Brushed Chrome	36 200 985-93
	Brushed Dark Platinum	36 200 985-99

Required miscellaneous

	<div> Concealed two-way diverter - </div> <div> <ul style="list-style-type: none"> <li>•max. recess depth 160 mm</li> <li>•min. recess depth 85 mm</li> </ul> </div>	35 202 970 90
---	--	---------------

36 200 985 Product version from 4/1/2022

mm [inches]



**Flow rate chart**



**Codes & Standards**

DIN 4109

ISO 3822

Scottish Water  
Byelaws

UK Water Supply  
Regulations

Ü-Zeichen



## SYMETRICS Concealed two-way diverter - Brushed Platinum

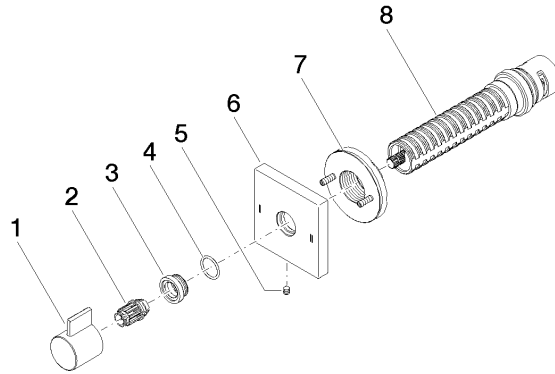
SYMETRICS

36 200 985 Product version from 4/1/2022

Certificates and sustainability

LGA\_38

WRAS\_2307



## Spare parts list

No.	Item Number	Name	Quantity used	Delivery time
	6 09 27 98 037-06	rosette	1.00	10
	4 09 14 10 017 90	seal	1.00	2
	1 09 20 98 002-06	handle	1.00	10
	5 09 31 11 294 90	pin	1.00	2
	8 90 90 03 304 10 90	diverter	1.00	2
	7 90 21 02 181 00 90	disc	1.00	2
	2 09 12 12 005 90	fixing cap	1.00	2
	3 09 12 12 043-06	base	1.00	10