







CL.1 Concealed two-way diverter - Brushed Platinum

CL.1


36 201 705    Product version from 4/1/2022



- rotary diverter
- rosette 60 x 60 mm
- WRAS

|   |                               |               |
|---|-------------------------------|---------------|
|  | Brushed Platinum              | 36 201 705-06 |
|  | Chrome                        | 36 201 705-00 |
|  | Dark Chrome                   | 36 201 705-19 |
|  | Brushed Champagne (22kt Gold) | 36 201 705-46 |
|  | Champagne (22kt Gold)         | 36 201 705-47 |
|  | Brushed Dark Platinum         | 36 201 705-99 |

Required miscellaneous

|   |  |               |
|---|--|---------------|
|  | <div>Concealed two-way diverter -</div> <div> <div>•max. recess depth 160 mm</div> <div>•min. recess depth 115 mm</div> </div> | 35 202 970 90 |
|---|--|---------------|

36 201 705 Product version from 4/1/2022

mm [inches]



**Flow rate chart**



**Codes & Standards**

|          |          |                           |                                |
|----------|----------|---------------------------|--------------------------------|
| DIN 4109 | ISO 3822 | Scottish Water<br>Byelaws | UK Water Supply<br>Regulations |
|----------|----------|---------------------------|--------------------------------|

Ü-Zeichen



## CL.1 Concealed two-way diverter - Brushed Platinum

---

CL.1

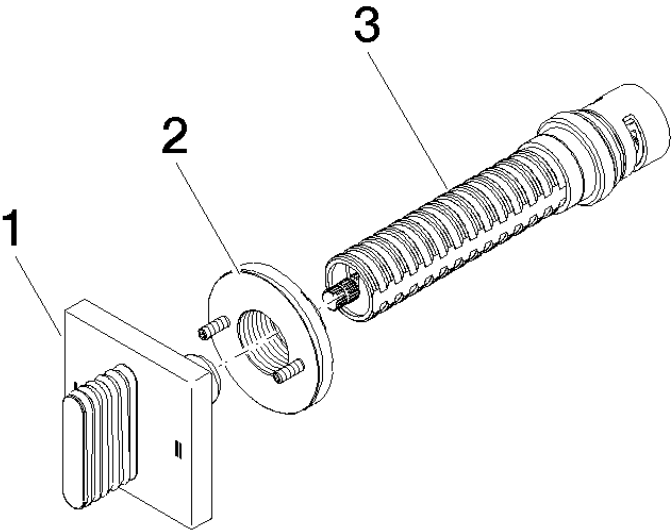
36 201 705 Product version from 4/1/2022

### Certificates and sustainability

---

LGA\_38

WRAS\_2307



Spare parts list

| No. | Item Number        | Name     | Quantity used | Delivery time |
|-----|--------------------|----------|---------------|---------------|
| 3   | 90 90 03 304 10 90 | diverter | 1.00          | 2             |
| 2   | 90 21 02 181 00 90 | disc     | 1.00          | 2             |
| 1   | 90 20 70 055 08-06 | handle   | 1.00          | 10            |