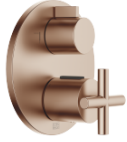


36 426 892

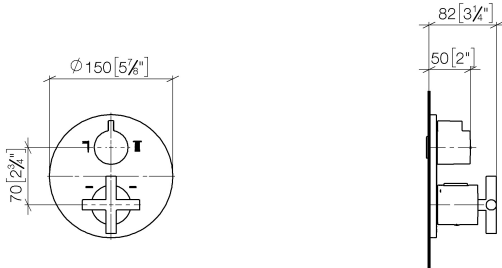


- rotary diverter with volume control and shut-off function
- cover plate Ø 150 mm
- temperature control handle with safety limit stop at 38°C
- hot water temperature limiter, can be preset
- WRAS 1906098

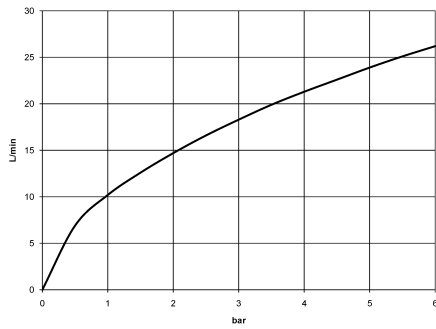
	Brushed Bronze	36 426 892-42
	Chrome	36 426 892-00
	Brushed Platinum	36 426 892-06
	Platinum	36 426 892-08
	Dark Chrome	36 426 892-19
	Brushed Durabronze (23kt Gold)	36 426 892-28
	Matte Black	36 426 892-33
	Brushed Champagne (22kt Gold)	36 426 892-46
	Champagne (22kt Gold)	36 426 892-47
	Brushed Chrome	36 426 892-93
	Brushed Dark Platinum	36 426 892-99

36 426 892

mm [inches]



Flow rate chart



Codes & Standards

DIN 4109

ISO 3822

Scottish Water
Byelaws

UK Water Supply
Regulations

Ü-Zeichen



TARA Concealed thermostat with two function volume control - Brushed Bronze

TARA

36 426 892

Certificates

WRAS_1906

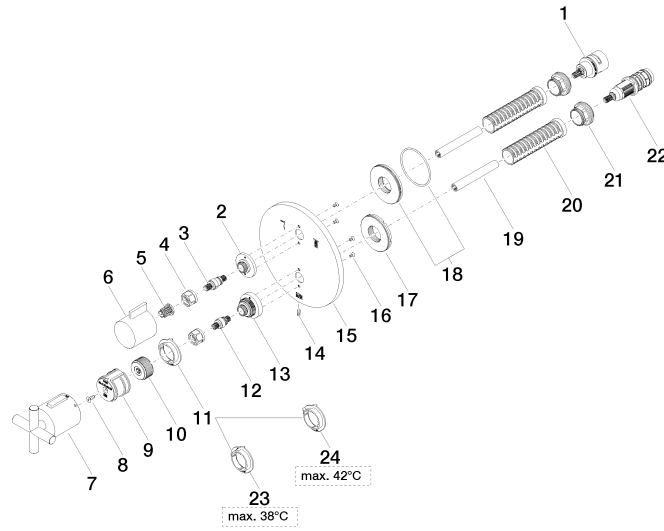
LGA_19

LGA_19

36 426 892

Product version from 5/1/2022

Parts for other finishes can be found here: [Chrome](#)





TARA Concealed thermostat with two function volume control - Brushed Bronze

TARA

36 426 892

Spare parts list

Product version from 5/1/2022

No.	Item Number	Name	Quantity used	Delivery time
	90 90 03 163 00 90	diverter	31	2