



MADISON Wall valve clockwise closing 3/4" - Brushed Platinum

MADISON

36 608 371





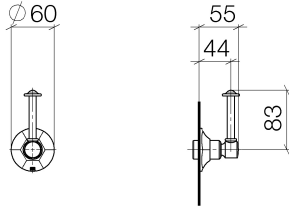
## MADISON Wall valve clockwise closing 3/4" - Brushed Platinum

---

MADISON

36 608 371

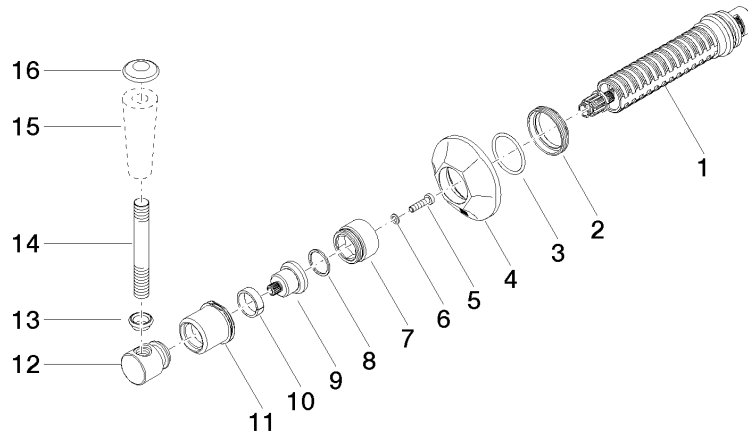
36 608 371



Certificates

IAPMO\_4976 (1). WRAS\_2010066.

36 608 371



**Spare parts list**

No.	Item Number	Name	Quantity used	Delivery time
1	90 90 03 127 00 90	top	1	2
2	09 23 10 125-00	nut	1	10
3	90 14 10 063 00 90	seal	1	2
4	09 27 37 102-06	rosette	1	10
5	09 30 30 069 90	screw	1	2
6	09 30 11 194 90	disc	1	2
7	09 18 30 007-06	sleeve	1	-
Spare part can no longer be ordered, please order the replacement item				
8	90 28 10 030 00 90	ring	1	2
9	09 12 12 064-06	base	1	-
Spare part can no longer be ordered, please order the replacement item				
10	90 14 15 021 00 90	ring	1	2
11	09 21 02 161-06	cover	1	10
12	09 20 37 101-06	handle	1	10
13	09 20 37 001-06	handle	1	10
14	09 28 22 013 90	pipe	1	2
15	11 170 370-06	MADISON Lever insert - Brushed Platinum	1	10
16	09 30 30 062-06	screw	1	10