

12 720 980    Product version from 10/1/2023

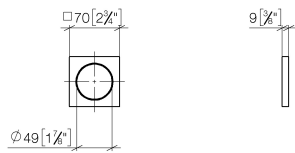


- Flange 2-3/4" x 2-3/4"

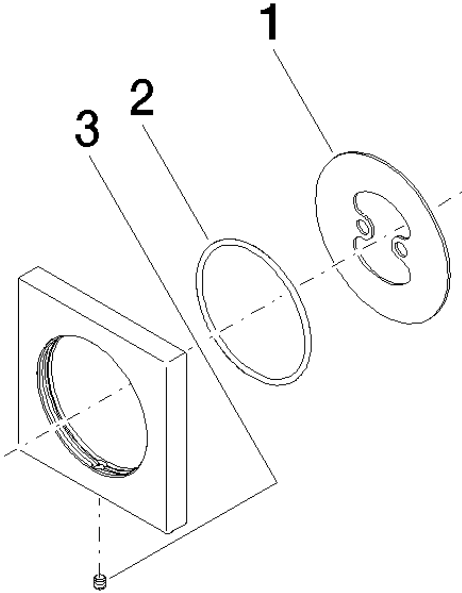
Only for combination with exposed trim parts 36 803 885-FF / 36 804 661-FF / 36 023 885-FF / 36 023 661-FF.

	Brushed Chrome	12 720 980-93
	Chrome	12 720 980-00
	Brushed Platinum	12 720 980-06
	Platinum	12 720 980-08
	Dark Chrome	12 720 980-19
	Light gold	12 720 980-26
	Brushed Light Gold	12 720 980-27
	Brushed Durabrass (23kt Gold)	12 720 980-28
	Matte Black	12 720 980-33
	Brushed Bronze	12 720 980-42
	Brushed Champagne (22kt Gold)	12 720 980-46
	Champagne (22kt Gold)	12 720 980-47
	Brushed Dark Platinum	12 720 980-99

mm [inches]



Parts for other  
finishes can be found  
here: [Chrome](#)



Spare parts list

Number	Item Number	Designation	Number of units	Lead time
2	09 14 10 046 90	seal	1.00	2
3	09 31 11 099 90	pin	1.00	2
1	09 30 11 291 90	disc	1.00	2