

# Escutcheon for tap hole cover - Brushed Bronze

SERIES-VARIOUS

12 730 970 Product version from 10/1/2023



- Flange diameter 2"

Only with final assembly kits 33800875-FF / 33805875-FF / 33816875-FF / 33818875-FF / 33826875-FF / 13700845-FF / 13700846-FF / 20713845-FF / 20713846-FF /

33500845-FF / 33506845-FF / 33521845-FF / 33526845-FF / 33526845-FF / 33500670-FF / 33521670-FF / 33537670-FF / 33600670-FF / 33800760-FF / 33800790-FF / 33826790-FF.

	Brushed Bronze	12 730 970-42
	Chrome	12 730 970-00
	Brushed Platinum	12 730 970-06
	Platinum	12 730 970-08
	Dark Chrome	12 730 970-19
	Light gold	12 730 970-26
	Brushed Light Gold	12 730 970-27
	Brushed Durabrass (23kt Gold)	12 730 970-28
	Matte Black	12 730 970-33
	Brushed Dark Brass	12 730 970-39
	Brushed Champagne (22kt Gold)	12 730 970-46
	Champagne (22kt Gold)	12 730 970-47
	Brushed Chrome	12 730 970-93
	Brushed Dark Platinum	12 730 970-99

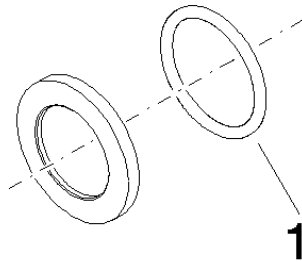
12 730 970 Product version from 10/1/2023

mm [inches]



12 730 970    Product version from 10/1/2023

Parts for other  
finishes can be found  
here: [Chrome](#)



Spare parts list

Number	Item Number	Designation	Number of units	Lead time
1	90 14 10 043 00 90	seal	1.00	2