

WATER SHEET Cascade spout for wall-mounted installation - Platinum

SERIES-VARIOUS

13 415 979

Product version from 10/1/2023




- CASCADE, flow rate max. 7 gpm (at 3 bar)
- Function from: gpm

Technical data:

- Cover plate 9-1/2" x 2-3/8"
- 5-7/8" Projection
- 1/2" connection
- Plug-in connection mounting

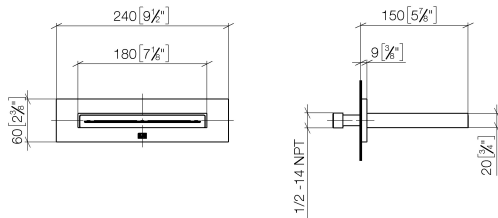
	Platinum	13 415 979-08
	Chrome	13 415 979-00
	Brushed Platinum	13 415 979-06
	Dark Chrome	13 415 979-19
	Light gold	13 415 979-26
	Brushed Light Gold	13 415 979-27
	Brushed Durabrass (23kt Gold)	13 415 979-28
	Matte Black	13 415 979-33
	Brushed Dark Brass	13 415 979-39
	Brushed Bronze	13 415 979-42
	Brushed Champagne (22kt Gold)	13 415 979-46
	Champagne (22kt Gold)	13 415 979-47
	Brushed Chrome	13 415 979-93
	Brushed Dark Platinum	13 415 979-99

Required article

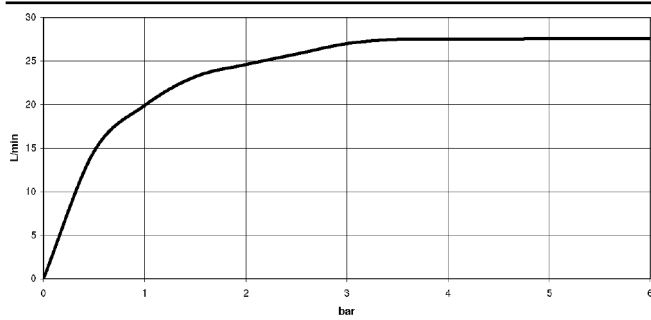
	Rough-in adapter -	35 080 970-90 0010
---	--------------------	-----------------------

13 415 979 Product version from 10/1/2023

mm [inches]



Flow rate chart



Trajectory length diagram



Codes & Standards

ASME A112.18.1	cUPC	DIN 4109	ISO 3822
Scottish Water Byelaws	UK Water Supply Regulations	Ü-Zeichen	



WATER SHEET Cascade spout for wall-mounted installation - Platinum

SERIES-VARIOUS

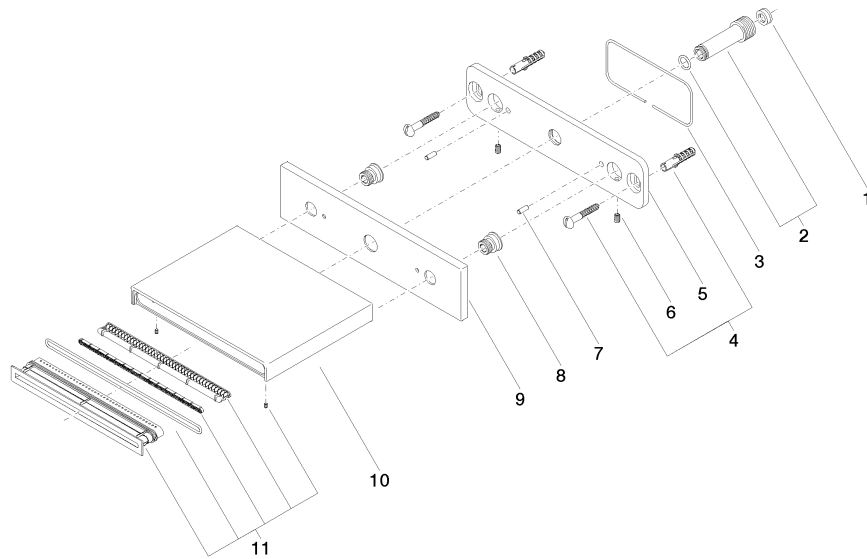
13 415 979 Product version from 10/1/2023

Certificates and sustainability

LGA_19

WRAS_2306

IAPMO_4976



Spare parts list

Number	Item Number	Designation	Number of units	Lead time
7	09 31 11 040 90	pin	2.00	2
9	09 27 78 031-08	rosette	1.00	40
4	04 30 31 024 01 90	fixing set	1.00	2
3	09 14 03 134 90	seal	1.00	2
10	09 11 78 003 20-08	spout	1.00	40
6	09 31 11 036 90	pin	2.00	2
1	09 23 01 057 90	flow reducer	1.00	2
8	09 24 03 214 90	nipple	2.00	2
11	90 29 03 059 00 90	insert	1.00	2
5	09 17 97 059 90	holder	1.00	2
2	90 24 03 213 00 90	connection	1.00	2