



WATER SHEET Cascade spout for wall-mounted installation - Brushed  
Durabrand (23kt Gold)

13 415 979 Product version from 10/1/2023



- 5-7/8" Projection
- CASCADE, flow rate max. 7 gpm (at 3 bar)
- Cover plate 9-1/2" x 2-3/8"
- 1/2" connection
- Plug-in connection mounting

	Brushed Durabrand (23kt Gold)	13 415 979-28
	Chrome	13 415 979-00
	Brushed Platinum	13 415 979-06
	Platinum	13 415 979-08
	Dark Chrome	13 415 979-19
	Light gold	13 415 979-26
	Brushed Light Gold	13 415 979-27
	Matte Black	13 415 979-33
	Brushed Bronze	13 415 979-42
	Brushed Champagne (22kt Gold)	13 415 979-46
	Champagne (22kt Gold)	13 415 979-47
	Brushed Chrome	13 415 979-93
	Brushed Dark Platinum	13 415 979-99

Required article

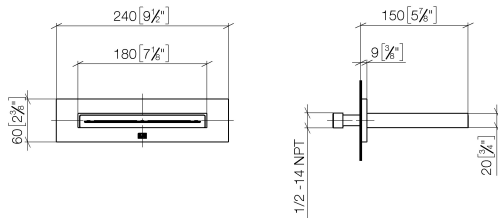
Rough-in adapter -

35 080 970-90  
0010

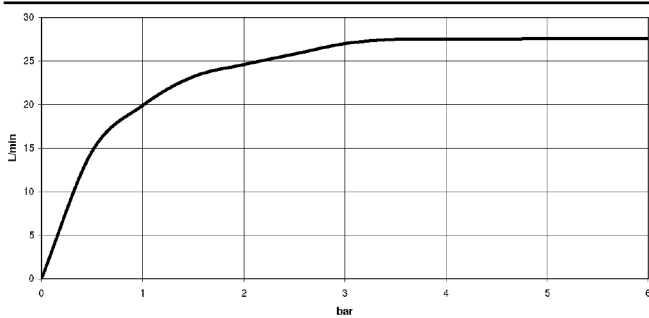


## WATER SHEET Cascade spout for wall-mounted installation - Brushed Durabronz (23kt Gold)

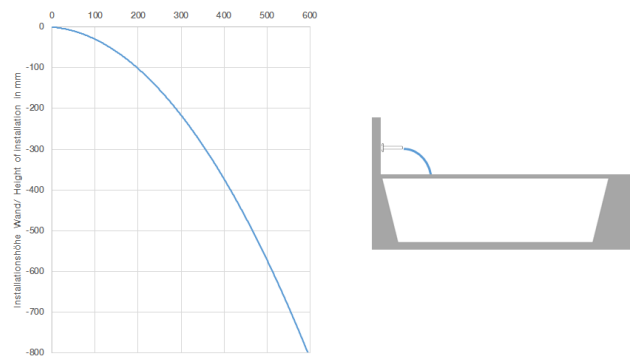
13 415 979 Product version from 10/1/2023  
mm [inches]



Flow rate chart



Trajectory length diagram



### Codes & Standards

ASME  
A112.18.1/CSA  
B125.1

DIN 4109

ISO 3822

Scottish Water  
Byelaws

UK Water Supply  
Regulations

Ü-Zeichen



## WATER SHEET Cascade spout for wall-mounted installation - Brushed Durabrass (23kt Gold)

---

13 415 979 Product version from 10/1/2023

### Certificates

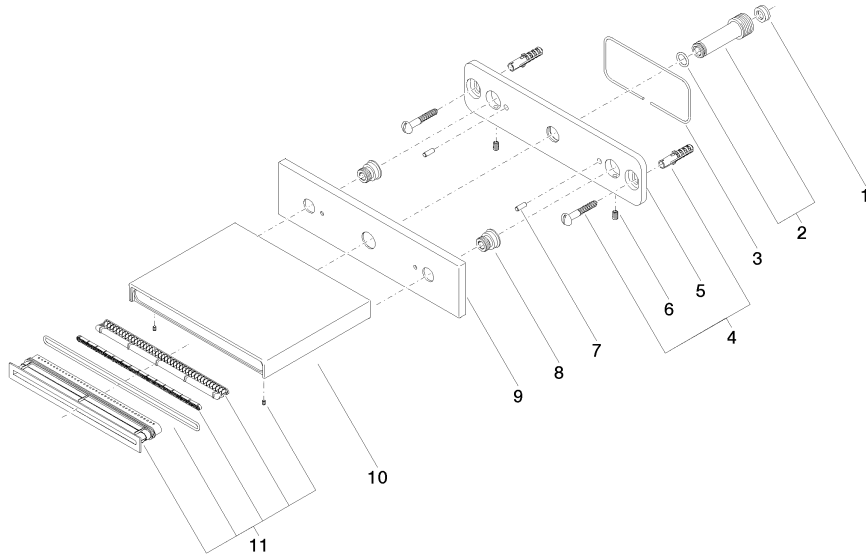
---

LGA\_19

WRAS\_2306

## WATER SHEET Cascade spout for wall-mounted installation - Brushed Durabronz (23kt Gold)

13 415 979 Product version from 10/1/2023



### Spare parts list

Number	Item Number	Designation	Number of units	Lead time
1	09 23 01 057 90	flow reducer	1	2
2	90 24 03 213 00 90	connection	1	2
3	09 14 03 134 90	seal	1	2
4	04 30 31 024 01 90	fixing set	1	2
5	09 17 97 059 90	holder	1	2
6	09 31 11 036 90	pin	2	2
7	09 31 11 040 90	pin	2	2
8	09 24 03 214 90	nipple	2	2
9	09 27 78 031-28	rosette	1	20
10	09 11 78 003 20-28	spout	1	20
11	90 29 03 059 00 90	insert	1	2