






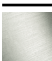
WATER FALL Cascade spout with PEARLSTREAM for wall-mounted installation - Brushed Light Gold

SERIES-VARIOUS

13 425 979 Product version from 10/1/2023



- Pearlstream
 - Flow rate max. 2.5 gpm (at 3 bar)
 - Function from: gpm
- Technical data:**
- Plate 9-1/2" x 2-3/8"
 - 7/8" Projection
 - Connection 1/2", can be cut to length
 - Plug-in connection mounting

	Brushed Light Gold	13 425 979-27
	Chrome	13 425 979-00
	Brushed Platinum	13 425 979-06
	Platinum	13 425 979-08
	Dark Chrome	13 425 979-19
	Light gold	13 425 979-26
	Brushed Durabrass (23kt Gold)	13 425 979-28
	Matte Black	13 425 979-33
	Brushed Dark Brass	13 425 979-39
	Brushed Bronze	13 425 979-42
	Brushed Champagne (22kt Gold)	13 425 979-46
	Champagne (22kt Gold)	13 425 979-47
	Brushed Chrome	13 425 979-93
	Brushed Dark Platinum	13 425 979-99

Required article

Rough-in adapter -

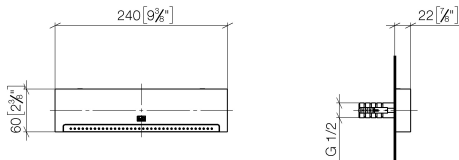
35 080 970-900010



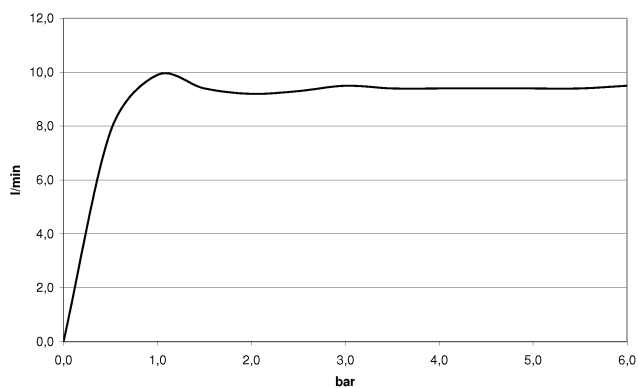
WATER FALL Cascade spout with PEARLSTREAM for wall-mounted installation - Brushed Light Gold

SERIES-VARIOUS

13 425 979 Product version from 10/1/2023
mm [inches]



Flow rate chart



Trajectory length diagram



Codes & Standards

DIN 4109

ISO 3822

Ü-Zeichen



WATER FALL Cascade spout with PEARLSTREAM for wall-mounted installation - Brushed Light Gold

SERIES-VARIOUS

13 425 979 Product version from 10/1/2023

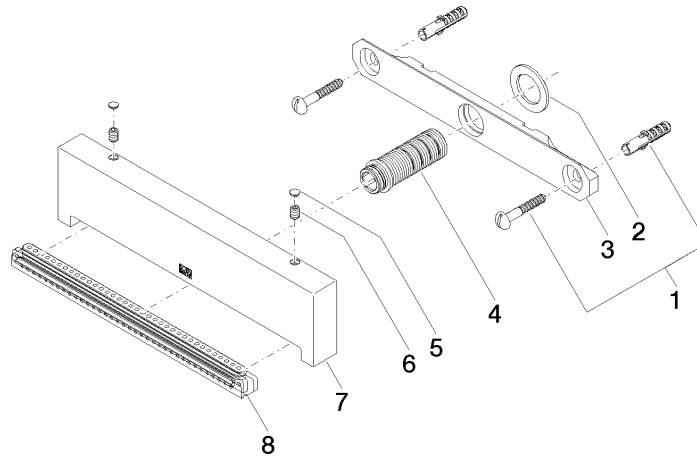
Certificates and sustainability

LGA_19

WATER FALL Cascade spout with PEARLSTREAM for wall-mounted installation - Brushed Light Gold

SERIES-VARIOUS

13 425 979 Product version from 10/1/2023



Spare parts list

Number	Item Number	Designation	Number of units	Lead time
3	09 17 97 053 90	holder	1.00	2
5	90 31 20 087 00-27	plug	1.00	30
8	90 29 03 071 00 90	insert	1.00	2
6	09 31 11 144 90	pin	2.00	2
4	90 24 03 199 00 90	connection	1.00	2
1	04 30 31 024 01 90	fixing set	1.00	2
7	09 17 01 185 20-27	spout	1.00	60
2	09 14 05 009 90	seal	1.00	2