




VAIA Tub spout without diverter for deck-mounted installation - Brushed Dark Platinum

13 612 809 Product version from 3/13/2017



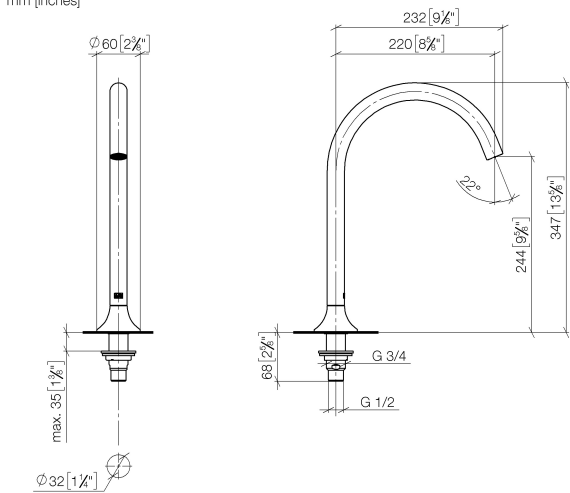
- 8-5/8" Projection
 - Round aerated stream
 - Total height 13-5/8"
 - Height to aerator/spout outlet 9-5/8"
 - 1-1/4" hole diameter
 - Flange diameter 2-3/8"
 - 1/2" connection
 - Water flow rate limited to max. 5.7 gpm
- Internal backflow preventer.

	Brushed Dark Platinum	13 612 809-99
Brushed Bronze		13 612 809-42
Brushed champagne (22kt gold)		13 612 809-46
Champagne (22kt Gold)		13 612 809-47

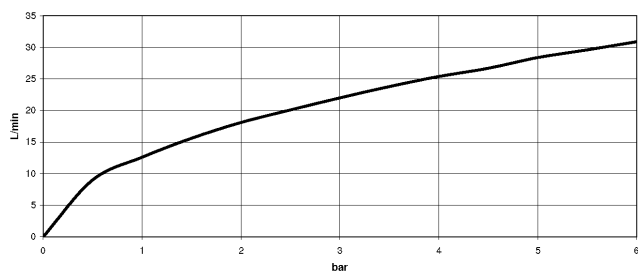


VAIA Tub spout without diverter for deck-mounted installation - Brushed Dark Platinum

13 612 809 Product version from 3/13/2017
mm [inches]



Flow rate chart



Codes & Standards

ASME A112.18.1	ASME A112.18.1/CSA B125.1	cUPC
----------------	---------------------------------	------



VAIA Tub spout without diverter for deck-mounted installation - Brushed Dark Platinum

13 612 809 Product version from 3/13/2017

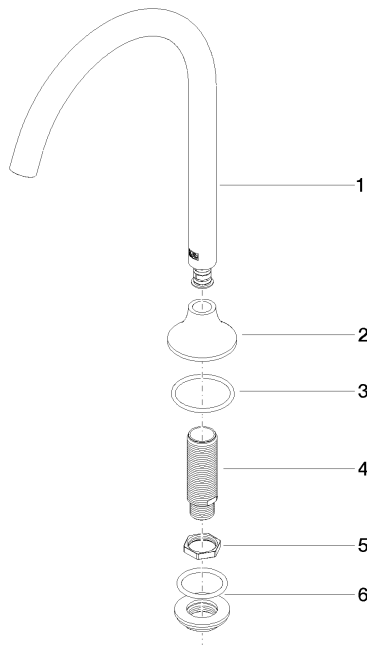
Certificates

IAPMO_4976

VAIA Tub spout without diverter for deck-mounted installation - Brushed Dark Platinum

13 612 809 Product version from 3/13/2017

Parts for other
finishes can be found
here: Brushed
Bronze



Spare parts list

Number	Item Number	Designation	Number of units	Lead time
1	90 28 22 316 00-99	spout	1	20
2	09 27 80 014-99	rosette	1	20
3	09 14 10 084 90	seal	1	2
4	90 30 01 117 90	90300111790	1	-
Spare part can no longer be ordered, please order the replacement item				
5	09 23 10 127 90	nut	1	2
6	04 23 10 004 04 90	fixing set	1	2
7	90 17 11 020 10 90	distributor	1	2
8	90 23 10 012 00 90	gasket kit	1	2