





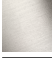




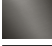
MEM Cascade tub spout without diverter for deck-mounted installation -
Brushed Champagne (22kt Gold)

MEM

13 630 740



- 9-1/4" Projection
- Cascade
- Total height 3-7/8"
- Height to aerator/spout outlet 3-1/8"
- 1-1/4" hole diameter
- 1/2" connection
- Water flow rate limited to max. 7 gpm

	Brushed Champagne (22kt Gold)	13 630 740-46
	Chrome	13 630 740-00
	Brushed Platinum	13 630 740-06
	Platinum	13 630 740-08
	Dark Chrome	13 630 740-19
	Brushed Durabronze (23kt Gold)	13 630 740-28
	Champagne (22kt Gold)	13 630 740-47
	Brushed Dark Platinum	13 630 740-99

MEM Cascade tub spout without diverter for deck-mounted installation - Brushed Champagne (22kt Gold)

MEM

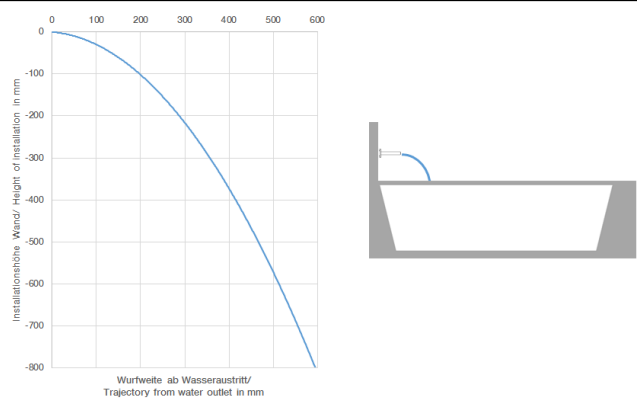
13 630 740
mm [inches]



Flow rate chart



Trajectory length diagram



Codes & Standards

ASME A112.18.1	cUPC	DIN 4109	ISO 3822
----------------	------	----------	----------

Scottish Water Byelaws	UK Water Supply Regulations	Ü-Zeichen
---------------------------	--------------------------------	-----------



MEM Cascade tub spout without diverter for deck-mounted installation -
Brushed Champagne (22kt Gold)

MEM

13 630 740
Certificates and sustainability

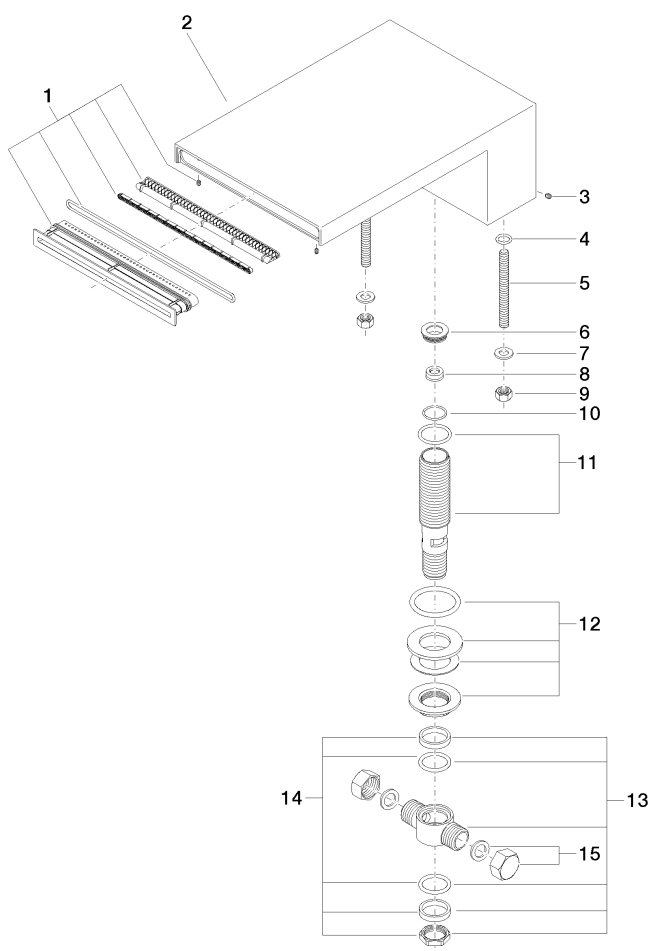
IAPMO_4976 LGA_19 WRAS_240502

MEM Cascade tub spout without diverter for deck-mounted installation - Brushed Champagne (22kt Gold)

MEM

13 630 740

Parts for other
finishes can be found
here: [Chrome](#)



Spare parts list

Number	Item Number	Designation	Number of units	Lead time
6	09 24 04 246 20 90	nipple	1.00	2
1	90 29 03 059 00 90	insert	1.00	2
14	90 23 10 012 00 90	gasket kit	1.00	2
11	90 30 01 033 00 90	base	1.00	2
8	09 23 01 057 90	flow reducer	1.00	2
7	09 30 11 045 90	disc	2.00	2
3	09 31 11 044 90	pin	1.00	2
5	09 31 11 011 90	pin	2.00	2
15	04 21 02 006 00 92	cap	2.00	2
4	09 14 10 008 90	seal	2.00	2
12	04 23 10 004 04 90	fixing set	1.00	2
9	09 23 10 023 90	nut	2.00	2
2	09 11 74 040-46	spout	1.00	30
10	09 14 10 140 90	seal	1.00	2
13	90 17 11 020 10 90	distributor	1.00	2