










MEM Tub spout without diverter for freestanding installation - Brushed Platinum

13 672 780 Product version from 9/30/2005



- 11" Projection
- Cascade
- Total height 32-5/8" - 35-3/8"
- Height to aerator/spout outlet 26-1/8" - 28-7/8"
- Flange 5-1/8" x 5-1/8"
- Water flow rate limited to max. 12.6 gpm

	Brushed Platinum	13 672 780-06
	Chrome	13 672 780-00
	Platinum	13 672 780-08
	Dark Chrome	13 672 780-19
	Brushed Durabrass (23kt Gold)	13 672 780-28
	Brushed Champagne (22kt Gold)	13 672 780-46
	Champagne (22kt Gold)	13 672 780-47

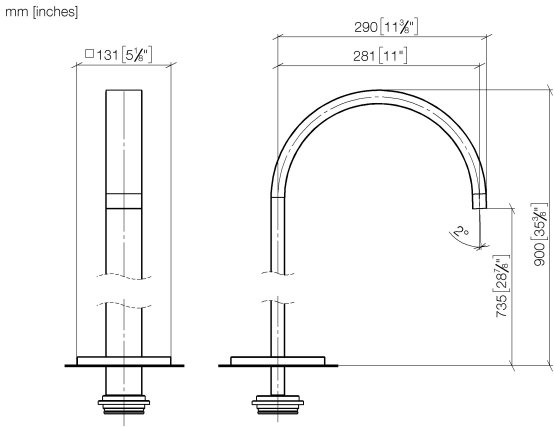
Required article



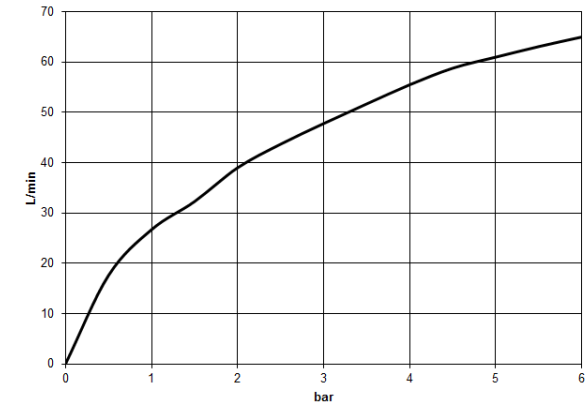
- | | |
|-----------------------------------|---------------|
| Floor mounting rough set - | 35 949 970-90 |
| •Max. rough in depth " | 0010 |
| •Min. rough in depth " | |

MEM Tub spout without diverter for freestanding installation - Brushed Platinum

13 672 780 Product version from 9/30/2005



Flow rate chart



Codes & Standards

ASME A112.18.1	ASME A112.18.1/CSA B125.1	cUPC	DIN 4109
ISO 3822	Scottish Water Byelaws	UK Water Supply Regulations	Ü-Zeichen



MEM Tub spout without diverter for freestanding installation - Brushed Platinum

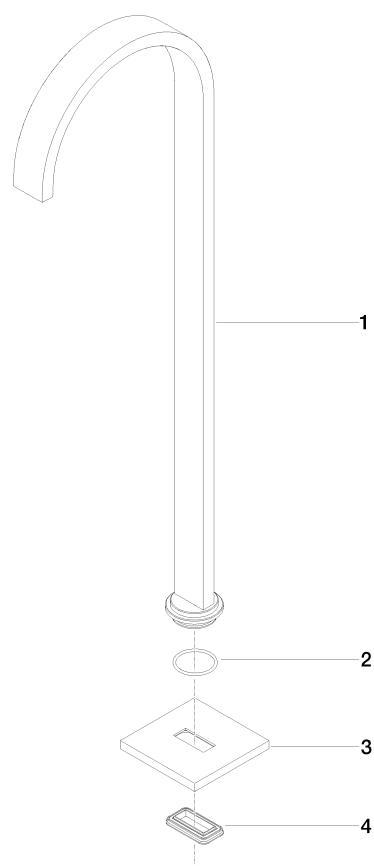
13 672 780 Product version from 9/30/2005

Certificates

IAPMO_4976 WRAS_2005 LGA_18

MEM Tub spout without diverter for freestanding installation - Brushed Platinum

13 672 780 Product version from 9/30/2005



Spare parts list

Number	Item Number	Designation	Number of units	Lead time
1	04 28 22 183 00-06	spout	1	60
2	09 14 10 084 90	seal	1	2
3	09 27 78 022-06	rosette	1	60
4	09 14 03 106 90	seal	1	2