





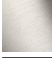




MEM Tub spout without diverter for freestanding installation - Brushed Champagne (22kt Gold)

MEM

13 672 780    Product version from 9/30/2005



- 11" Projection
- Cascade
- Total height 32-5/8" - 35-3/8"
- Height to aerator/spout outlet 26-1/8" - 28-7/8"
- Flange 5-1/8" x 5-1/8"
- Water flow rate limited to max. 12.6 gpm

	Brushed Champagne (22kt Gold)	13 672 780-46
	Chrome	13 672 780-00
	Brushed Platinum	13 672 780-06
	Platinum	13 672 780-08
	Dark Chrome	13 672 780-19
	Brushed Durabronze (23kt Gold)	13 672 780-28
	Champagne (22kt Gold)	13 672 780-47

Required article



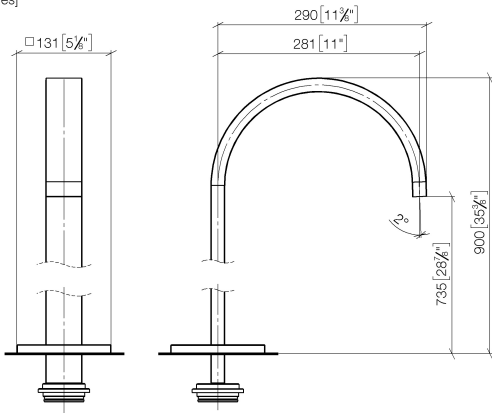
- Floor mounting rough set -**  
•Max. rough in depth 5-7/8"  
•Min. rough in depth 3-1/8"
- 35 949 970-90  
0010



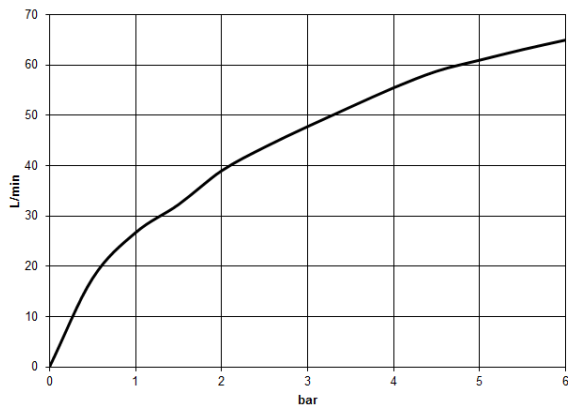
MEM Tub spout without diverter for freestanding installation - Brushed Champagne (22kt Gold)

MEM

13 672 780    Product version from 9/30/2005  
mm [inches]



Flow rate chart



Codes & Standards

ASME A112.18.1	cUPC	DIN 4109	ISO 3822
Scottish Water Byelaws	UK Water Supply Regulations	Ü-Zeichen	



MEM Tub spout without diverter for freestanding installation - Brushed Champagne (22kt Gold)

MEM

13 672 780    Product version from 9/30/2005

Certificates and sustainability

IAPMO_4976	LGA_18	WRAS_250602
------------	--------	-------------

# MEM Tub spout without diverter for freestanding installation - Brushed Champagne (22kt Gold)

MEM

13 672 780 Product version from 9/30/2005

