



MEM Lavatory spout, wall-mounted without drain - Brushed Platinum

13 800 782 Product version from 7/1/2016



- 7-7/8" Projection
 - Rigid spout
 - Rectangular aerated stream
 - 1-1/2" hole diameter
 - Flange 2-3/8" x 2-3/8"
 - 1/2" connection
 - Water flow rate limited to max. 1.2 gpm
 - lead-free
 - This product can help a building meet the requirements of Green Building Rating Systems, e.g. LEED®, BREEAM®, DGNB
- For Touchfree control please order eSet Touchfree with temperature adjustment**

For Touchfree control please order eSet Touchfree with temperature adjustment

Required article

Rough-in adapter -

35 080 970-90
0010

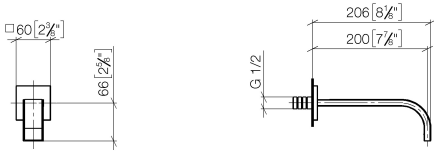




MEM Lavatory spout, wall-mounted without drain - Brushed Platinum

13 800 782 Product version from 7/1/2016

mm [inches]



Codes & Standards

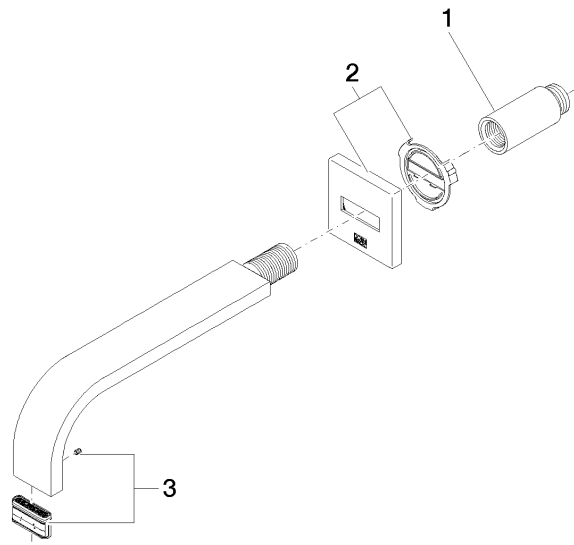
ASME A112.18.1/CSA B125.1 NSF372	California Energy Commission (CEC) NSF61	NSF/ANSI 372	NSF/ANSI/CAN 61
---	---	--------------	--------------------

Certificates

IAPMO_N-4976 IAPMO_6

MEM Lavatory spout, wall-mounted without drain - Brushed Platinum

13 800 782 Product version from 7/1/2016



Spare parts list

Number	Item Number	Designation	Number of units	Lead time
1	09 24 03 081 10 90	extension	1	2
2	90 27 78 035 00-06	rosette	1	10
3	90 29 03 118 00 90	aerator	1	2