

VAIA Lavatory spout, wall-mounted without drain - Chrome

13 800 809
Product version from 3/13/2017



- 7-1/2" Projection
  - Rigid spout
  - Round aerated stream
  - 1-1/2" hole diameter
  - Flange diameter 2-3/8"
  - 1/2" connection
  - Plug-in connection mounting
  - Water flow rate limited to max. 1.2 gpm
  - lead-free
  - This product can help a building meet the requirements of Green Building Rating Systems, e.g. LEED®, BREEAM®, DGNB
- For Touchfree control please order eSet Touchfree with temperature adjustment**

For Touchfree control please order eSet Touchfree with temperature adjustment

Required article

Rough-in adapter -

35 080 970-900010

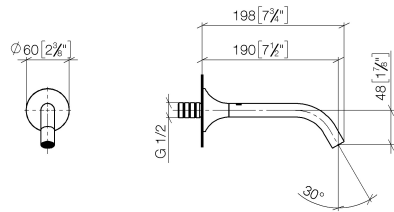




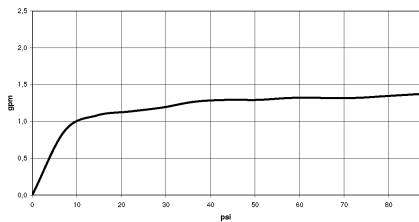
VAIA Lavatory spout, wall-mounted without drain - Chrome

13 800 809    Product version from 3/13/2017


mm [inches]



Flow rate chart



Codes & Standards

ASME A112.18.1	ASME A112.18.1/CSA B125.1	California Energy Commission (CEC)	cUPC
EPA WaterSense	NSF/ANSI 372	NSF/ANSI/CAN 61	NSF372
NSF61	Water Sense	WaterSense	



VAIA Lavatory spout, wall-mounted without drain - Chrome

---

13 800 809    Product version from 3/13/2017

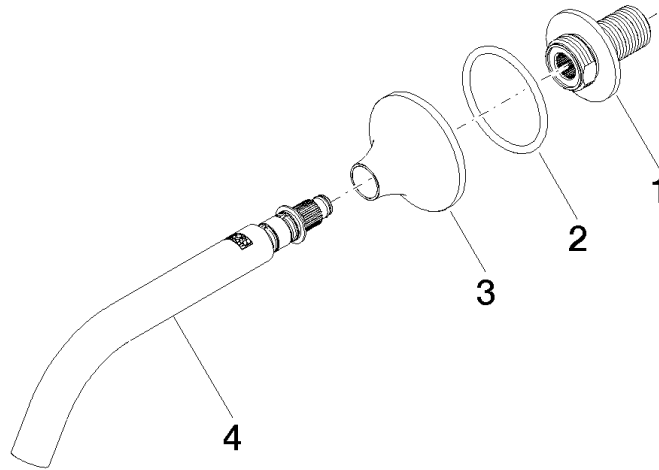
Certificates

---

IAPMO_N-4	IAPMO_4976	IAPMO_8834	IAPMO_6
-----------	------------	------------	---------

## VAIA Lavatory spout, wall-mounted without drain - Chrome

13 800 809 Product version from 3/13/2017



### Spare parts list

Number	Item Number	Designation	Number of units	Lead time
1	09 24 03 269 90	nipple	1	2
2	09 14 10 084 90	seal	1	2
3	09 27 80 011-00	rosette	1	10
4	90 28 22 310 01-00	spout	1	10