

META Tub spout for wall-mounted installation - Matte Black

META


13 801 660 Product version up to 5/27/2021



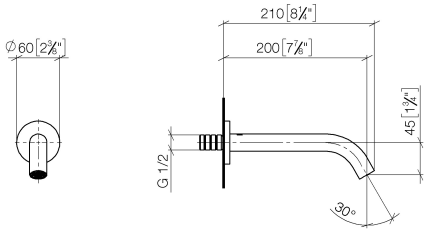
- 7-7/8" Projection
- Round aerator
- Flange diameter 2-3/8"
- 1-1/2" hole diameter
- 1/2" connection
- Water flow rate limited to max. 6.5 gpm

	Matte Black	13 801 660-33
	Chrome	13 801 660-00
	Brushed Platinum	13 801 660-06
	Dark Chrome	13 801 660-19
	Light gold	13 801 660-26
	Brushed Light Gold	13 801 660-27
	Brushed Dark Brass	13 801 660-39
	Brushed Bronze	13 801 660-42
	Brushed Champagne (22kt Gold)	13 801 660-46
	Champagne (22kt Gold)	13 801 660-47
	Brushed Chrome	13 801 660-93
	Brushed Dark Platinum	13 801 660-99

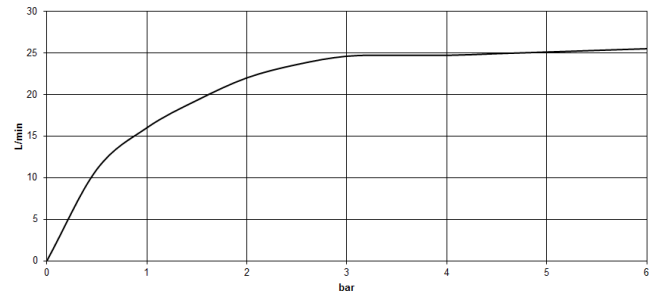
Recommended article

	Rough-in adapter -	35 080 970-90 0010
-------------------------------------------------------------------------------------	---------------------------	-----------------------

mm [inches]



Flow rate chart



Codes & Standards

ASME A112.18.1	cUPC	DIN 4109	ISO 3822
Scottish Water Byelaws	UK Water Supply Regulations	Ü-Zeichen	



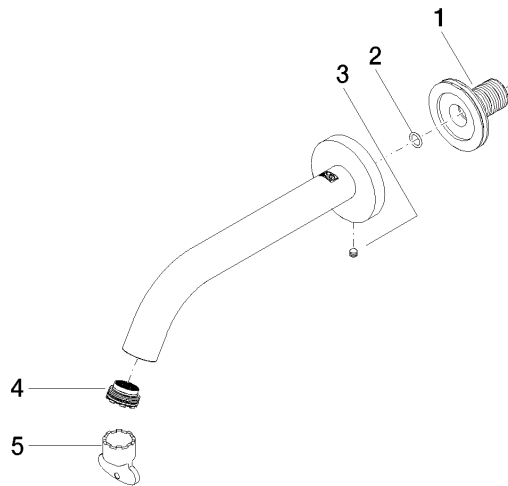
META Tub spout for wall-mounted installation - Matte Black

META

13 801 660 Product version up to 5/27/2021

Certificates and sustainability

IAPMO_4976	LGA_18	WRAS_250402
------------	--------	-------------



Spare parts list

Number	Item Number	Designation	Number of units	Lead time
1	90 24 03 280 00 90	nipple	1.00	2
5	04 30 09 024 00 90	key	1.00	2
4	09 29 03 055 90	aerator	1.00	60
2	90 14 10 060 00 90	seal	1.00	2
3	90 31 11 112 00 90	pin	1.00	2