

META Tub spout for wall-mounted installation - Brushed Bronze

13 801 660 Product version from 5/28/2021



- 7-7/8" Projection
- Round aerator
- Flange diameter 2-3/8"
- 1-1/2" hole diameter
- 1/2" connection
- Water flow rate limited to max. 6.5 gpm

	Brushed Bronze	13 801 660-42
	Chrome	13 801 660-00
	Brushed Platinum	13 801 660-06
	Dark Chrome	13 801 660-19
	Light gold	13 801 660-26
	Brushed Light Gold	13 801 660-27
	Matte Black	13 801 660-33
	Brushed Champagne (22kt Gold)	13 801 660-46
	Champagne (22kt Gold)	13 801 660-47
	Brushed Chrome	13 801 660-93
	Brushed Dark Platinum	13 801 660-99

Recommended article

Rough-in adapter -

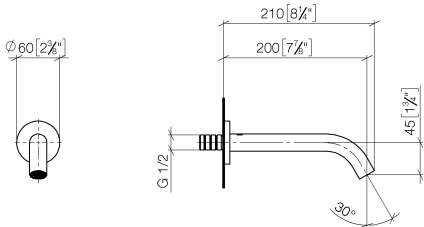
35 080 970-90
0010



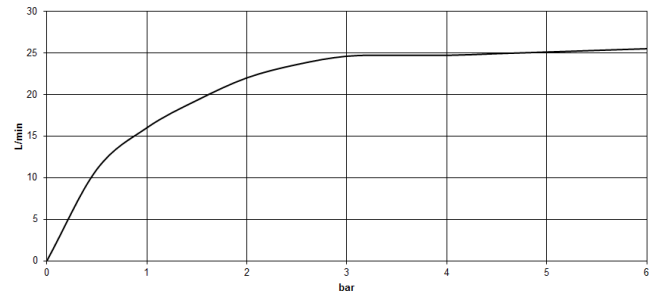
META Tub spout for wall-mounted installation - Brushed Bronze

13 801 660 Product version from 5/28/2021

mm [inches]



Flow rate chart



Codes & Standards

ASME A112.18.1	ASME A112.18.1/CSA B125.1	cUPC
----------------	---------------------------------	------



META Tub spout for wall-mounted installation - Brushed Bronze

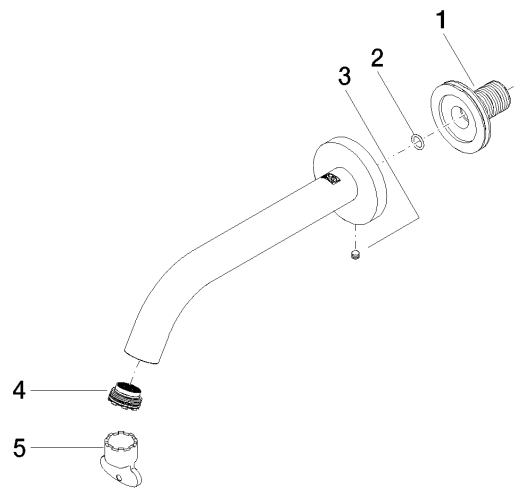
13 801 660 Product version from 5/28/2021

Certificates

IAPMO_4976

META Tub spout for wall-mounted installation - Brushed Bronze

13 801 660 Product version from 5/28/2021



Spare parts list

Number	Item Number	Designation	Number of units	Lead time
1	90 24 03 280 00 90	nipple	1	2
2	90 14 10 060 00 90	seal	1	2
3	90 31 11 112 00 90	pin	1	2
4	09 29 03 124 90	aerator	1	2
5	04 30 09 024 00 90	key	1	2