





LULU Tub spout for wall-mounted installation - Brushed Platinum

13 801 710 Product version from 3/31/2009



- 7-7/8" Projection
- Round aerator
- 1-1/2" hole diameter
- 1/2" connection
- Plug-in connection mounting
- Water flow rate limited to max. 6.2 gpm

	Brushed Platinum	13 801 710-06
	Chrome	13 801 710-00

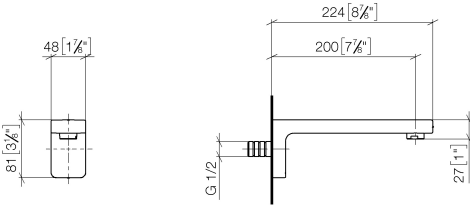
Required article

	Rough-in adapter -	35 080 970-90 0010
---	---------------------------	-----------------------

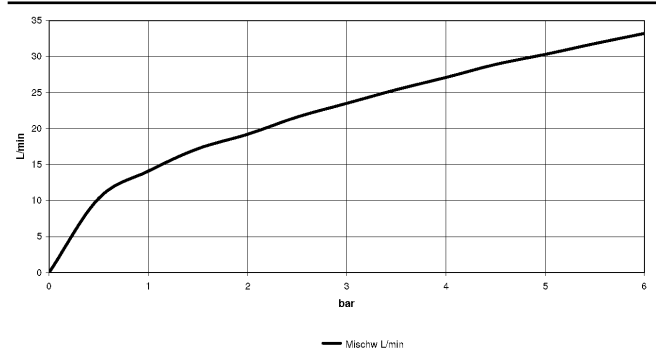
LULU Tub spout for wall-mounted installation - Brushed Platinum

13 801 710 Product version from 3/31/2009

mm [inches]



Flow rate chart



Codes & Standards

ASME A112.18.1	ASME A112.18.1/CSA B125.1	cUPC	DIN 4109
ISO 3822	Scottish Water Byelaws	UK Water Supply Regulations	Ü-Zeichen



LULU Tub spout for wall-mounted installation - Brushed Platinum

13 801 710 Product version from 3/31/2009

Certificates

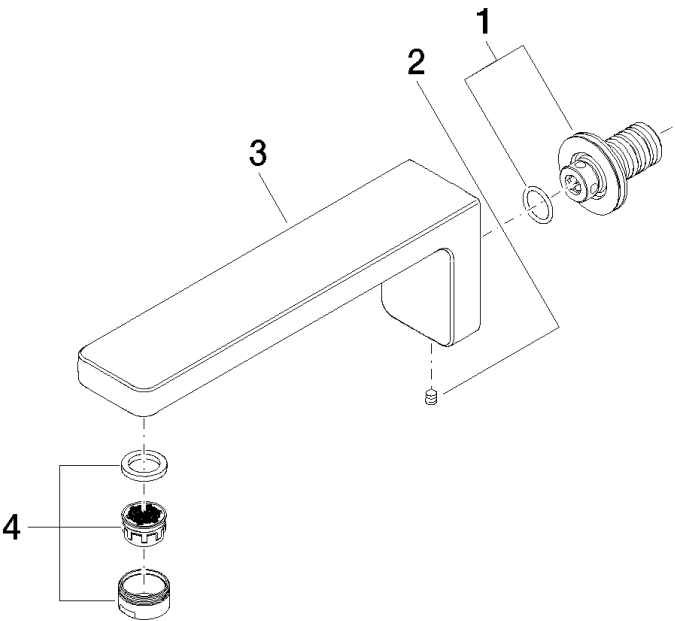
LGA_9

IAPMO_4976

WRAS_2305

LULU Tub spout for wall-mounted installation - Brushed Platinum

13 801 710 Product version from 3/31/2009



Spare parts list

Number	Item Number	Designation	Number of units	Lead time
1	90 24 03 108 00 90	nipple set	1	2
2	90 31 11 004 00 90	pin	1	2
3	09 11 71 090 10-06	spout	1	10
4	90 23 01 118 00-06	aerator	1	10