



TARA Tub spout for wall-mounted installation - Matte Black

TARA

13 801 892    Product version from 4/1/2024



- 7-7/8" Projection
- Round aerator
- Flange diameter 2-1/8"
- 1-1/2" hole diameter
- 1/2" connection
- Water flow rate limited to max. 7.7 gpm

	Matte Black	13 801 892-33
	Chrome	13 801 892-00
	Brushed Platinum	13 801 892-06
	Platinum	13 801 892-08
	Dark Chrome	13 801 892-19
	Brushed Light Gold	13 801 892-27
	Brushed Durabrass (23kt Gold)	13 801 892-28
	Brushed Dark Brass	13 801 892-39
	Brushed Bronze	13 801 892-42
	Brushed Champagne (22kt Gold)	13 801 892-46
	Champagne (22kt Gold)	13 801 892-47
	Brushed Chrome	13 801 892-93
	Brushed Dark Platinum	13 801 892-99

Required article

Rough-in adapter -

35 080 970-90  
0010





TARA Tub spout for wall-mounted installation - Matte Black

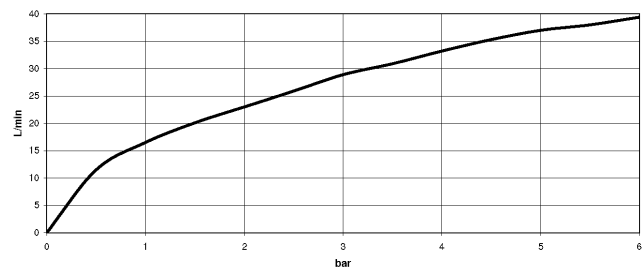
TARA

13 801 892    Product version from 4/1/2024

mm [inches]



Flow rate chart



Codes & Standards

ASME A112.18.1	cUPC	DIN 4109	ISO 3822
Scottish Water Byelaws	UK Water Supply Regulations	Ü-Zeichen	



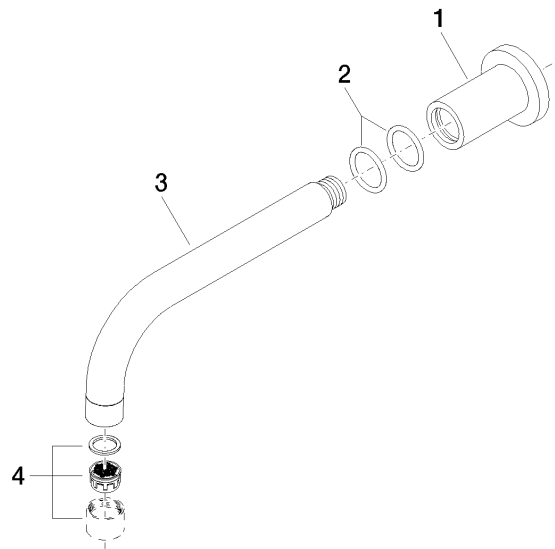
TARA Tub spout for wall-mounted installation - Matte Black

TARA

13 801 892 Product version from 4/1/2024

Certificates and sustainability

LGA_18	IAPMO_4976	WRAS_240602
--------	------------	-------------



Spare parts list

Number	Item Number	Designation	Number of units	Lead time
4	90 23 01 024 00-33	aerator	1.00	30
3	04 28 22 198 20-33	spout	1.00	30
1	09 27 89 009-33	rosette	1.00	30
2	90 14 10 025 00 90	seal	2.00	2