



TARA Tub spout for wall-mounted installation - Brushed Chrome

TARA

13 801 892    Product version from 4/1/2024



- 7-7/8" Projection
- Round aerator
- Flange diameter 2-1/8"
- 1-1/2" hole diameter
- 1/2" connection
- Water flow rate limited to max. 7.7 gpm

	Brushed Chrome	13 801 892-93
	Chrome	13 801 892-00
	Brushed Platinum	13 801 892-06
	Platinum	13 801 892-08
	Dark Chrome	13 801 892-19
	Brushed Light Gold	13 801 892-27
	Brushed Durabrass (23kt Gold)	13 801 892-28
	Matte Black	13 801 892-33
	Brushed Dark Brass	13 801 892-39
	Brushed Bronze	13 801 892-42
	Brushed Champagne (22kt Gold)	13 801 892-46
	Champagne (22kt Gold)	13 801 892-47
	Brushed Dark Platinum	13 801 892-99



TARA Tub spout for wall-mounted installation - Brushed Chrome

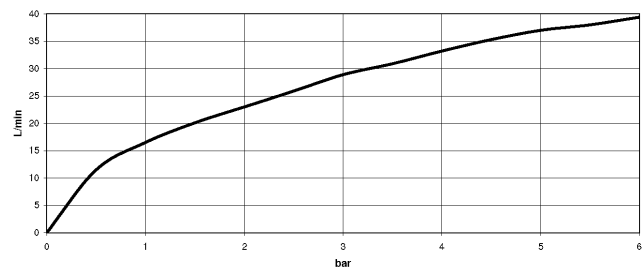
TARA

13 801 892    Product version from 4/1/2024

mm [inches]



Flow rate chart



Codes & Standards

ASME A112.18.1	cUPC	DIN 4109	ISO 3822
Scottish Water Byelaws	UK Water Supply Regulations	Ü-Zeichen	



TARA Tub spout for wall-mounted installation - Brushed Chrome

TARA

13 801 892 Product version from 4/1/2024

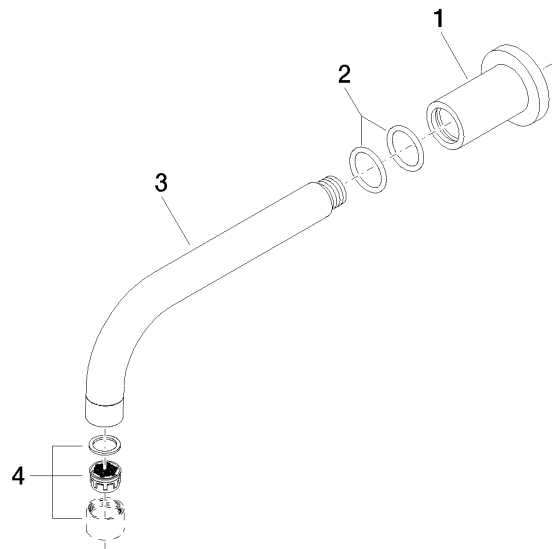
Certificates and sustainability

LGA_18	IAPMO_4976	WRAS_240602
--------	------------	-------------

Parts for other

finishes can be found

here: [Chrome](#)



Spare parts list

Number	Item Number	Designation	Number of units	Lead time
1	09 27 89 009-93	rosette	1.00	20
4	90 23 01 024 00-93	aerator	1.00	20
3	04 28 22 198 20-93	spout	1.00	20
2	90 14 10 025 00 90	seal	2.00	2