



TARA ULTRA HOT & COLD WATER DISPENSER - Platinum

TARA ULTRA

17 861 875 Product version from 4/1/2014 to 5/27/2021



- 5-3/4" Projection
- Rigid, thermally insulated spout
- Laminar stream
- Total height 11-3/8"
- 7-1/8" height to aerator/spout outlet
- 1-3/8" hole diameter
- Provides filtered, hot water, 199°F max. temperature
- Provides filtered, cold water (not chilled)
- Water flow rate limited to max. 0.5 gpm
- control unit for wall assembly (5-3/8" x 6-1/4" x 2-3/8")
- electronic valve
- plug-in power supply, 100-230 V, 50-60 Hz, 18 W, incl. country-specific adaptor set
- lead-free
- One lever for hot and cold water
- Spout ring cannot be removed.
- This product can help a building meet the requirements of Green Building Rating Systems, e.g. LEED®, BREEAM®, DGNB

Compatible with Insinkerator® hot water tank HWT300-F3000S. Tank and filter not supplied from Dornbracht. More information on tank and filter at www.insinkerator.com.

The installation must be above a kitchen sink.

We recommend replacing the filter cartridge every six months. Please see the installation manual for more information.

Specification and technical data sheets can be found on www.dornbracht.com/professional

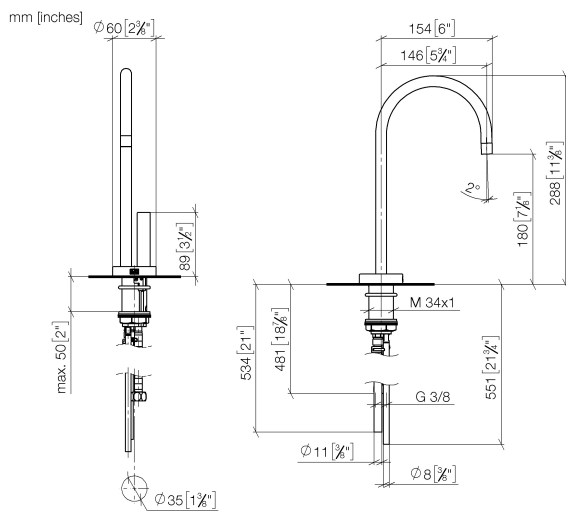
(ADA)

NOTE: Not compatible with Reverse Osmosis

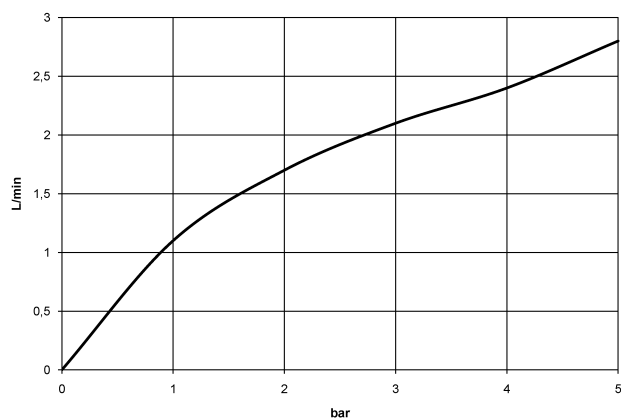
Not compatible with reverse osmosis filtration

	Platinum	17 861 875-08
	Chrome	17 861 875-00
	Brushed Platinum	17 861 875-06
	Durabrand (23kt Gold)	17 861 875-09
	Dark Chrome	17 861 875-19
	Brushed Durabrand (23kt Gold)	17 861 875-28
	Matte Black	17 861 875-33
	Brushed Champagne (22kt Gold)	17 861 875-46
	Champagne (22kt Gold)	17 861 875-47
	Brushed Chrome	17 861 875-93
	Brushed Dark Platinum	17 861 875-99

17 861 875 Product version from 4/1/2014 to 5/27/2021



Flow rate chart



Codes & Standards

ADA	ASME A112.18.1	California Energy Commission (CEC)	cUPC
DIN 4109	Executive Order no. 1007	ISO 3822	NSF372
NSF61	Ü-Zeichen		



TARA ULTRA HOT & COLD WATER DISPENSER - Platinum

TARA ULTRA

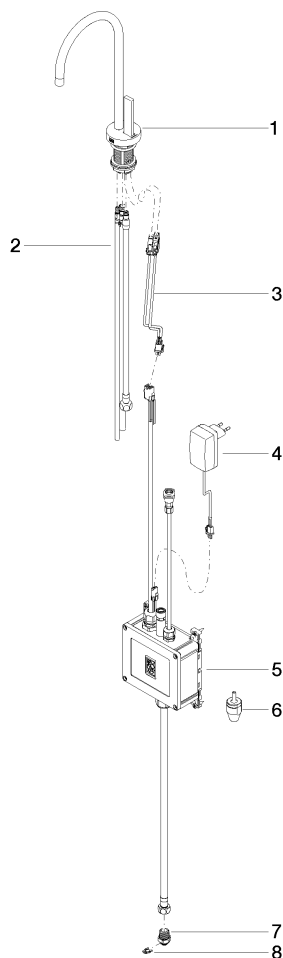
17 861 875 Product version from 4/1/2014 to 5/27/2021

Certificates and sustainability

IAPMO_N-4	IAPMO_4976	GDV_0400	LGA_28	IAPMO_6
-----------	------------	----------	--------	---------

17 861 875 Product version from 4/1/2014 to 5/27/2021

Parts for other
finishes can be found
here: [Chrome](#)



Spare parts list

Number	Item Number	Designation	Number of units	Lead time
6	90 24 04 291 00 90	insert	1.00	2
8	09 16 01 045 90	ring	1.00	2
3	90 10 01 048 00 90	electronic accessories	1.00	2
2	90 30 04 067 00 90	hose	1.00	2
1	90 17 85 100 05-08	fitting	1.00	40
7	09 24 04 293 90	nipple	1.00	2
4	04 10 01 050 00 90	power supply	1.00	60
5	90 11 11 064 01 90	electronic accessories	1.00	2