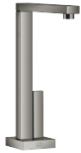


LOT HOT & COLD WATER DISPENSER - Dark Chrome

17 871 680 Product version from 3/1/2025



- 5-3/4" Projection
- Rigid spout
- Laminar stream
- Total height 9-1/8"
- 8-3/8" height to aerator/spout outlet
- 1-3/8" hole diameter
- Provides filtered, hot water, 199°F max. temperature
- Provides filtered water
- Water flow rate limited to max. 1 gpm
- mechanical valve
- lead-free
- One lever for hot and cold water
- This product can help a building meet the requirements of Green Building Rating Systems, e.g. LEED®, BREEAM®, DGNB

NOTE: Not compatible with Reverse Osmosis

Compatible with Insinkerator® hot water tank HWT300-F3000S. Tank and filter not supplied from Dornbracht. More information on tank and filter at www.inksinkerator.com.

Adaptor hose kit 1252097090 available to be compatible with Mountain Plumbing hot water tank MT641-3 or similar product that uses the same fitting size and configuration without vent.

Compatible with standard filtration systems or chillers with 1/4" compression connection e.g. Mountain Plumbing MT670-2.

The installation must be above a kitchen sink.

We recommend replacing the filter cartridge every six months. Please see the installation manual for more information.

Specification and technical data sheets can be found on www.dornbracht.com/professional

| | | |
|---|-------------------------------|---------------|
|  | Dark Chrome | 17 871 680-19 |
|  | Chrome | 17 871 680-00 |
|  | Brushed Platinum | 17 871 680-06 |
|  | Platinum | 17 871 680-08 |
|  | Brushed Durabronz (23kt Gold) | 17 871 680-28 |
|  | Brushed Champagne (22kt Gold) | 17 871 680-46 |
|  | Champagne (22kt Gold) | 17 871 680-47 |
|  | Brushed Dark Platinum | 17 871 680-99 |

Recommended article

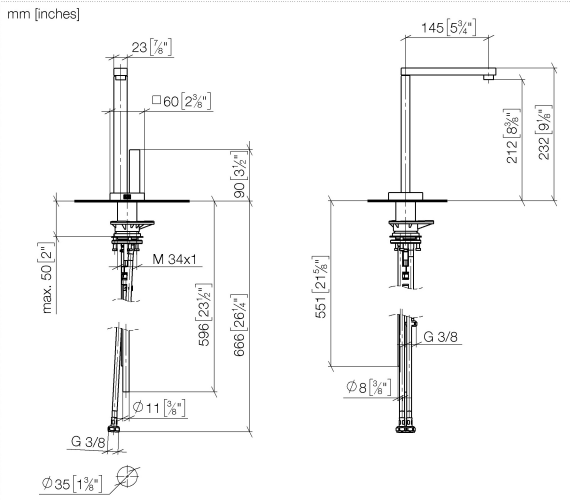
Adapter

12 520 970 90

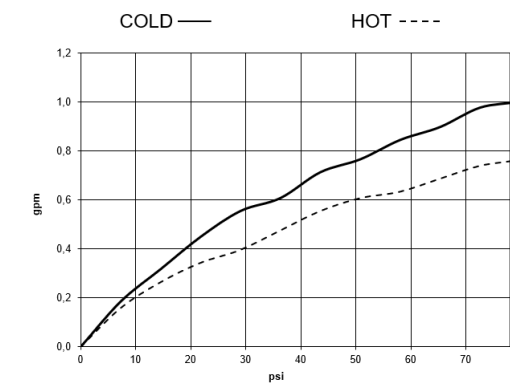


LOT HOT & COLD WATER DISPENSER - Dark Chrome

17 871 680 Product version from 3/1/2025

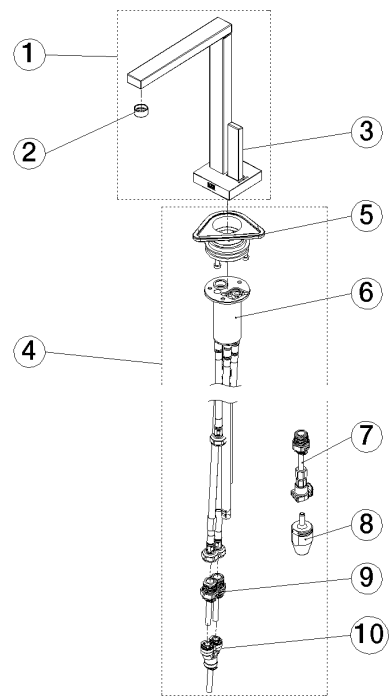


Flow rate chart



LOT HOT & COLD WATER DISPENSER - Dark Chrome

17 871 680 Product version from 3/1/2025



Spare parts list

| Number | Item Number | Designation | Number of units | Lead time |
|--|--------------------|-------------|-----------------|-----------|
| 1 | 90 17 87 168 00-19 | spout | 1 | - |
| Spare part can no longer be ordered, please order the replacement item | | | | |
| 2 | 90 17 87 179 00 90 | set | 1 | - |
| Spare part can no longer be ordered, please order the replacement item | | | | |