



- 5-5/8" Projection
- Swiveling spout 360°
- Laminar stream
- Total height 9-7/8"
- 8-7/8" height to aerator/spout outlet
- 1-3/8" hole diameter
- Provides filtered, hot water, 199°F max. temperature
- Provides filtered water
- Water flow rate limited to max. 1 gpm
- mechanical valve
- lead-free
- One lever for hot and cold water
- This product can help a building meet the requirements of Green Building Rating Systems, e.g. LEED®, BREEAM®, DGNB

Compatible with Insinkerator® hot water tank HWT300-F3000S. Tank and filter not supplied from Dornbracht. More information on tank and filter at www.inksinkerator.com.

Compatible with standard filtration systems or chillers with 1/4" compression connection e.g. Mountain Plumbing MT670-2.

The installation must be above a kitchen sink.

We recommend replacing the filter cartridge every six months. Please see the installation manual for more information.

Specification and technical data sheets can be found on www.dornbracht.com/professional

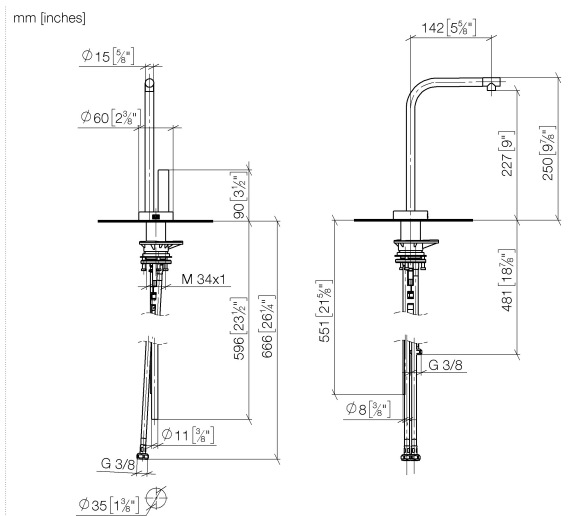
NOTE: Not compatible with Reverse Osmosis

Adaptor hose kit 1252097090 available to be compatible with Mountain Plumbing hot water tank MT641-3 or similar product that uses the same fitting size and configuration without vent.

Not compatible with reverse osmosis filtration

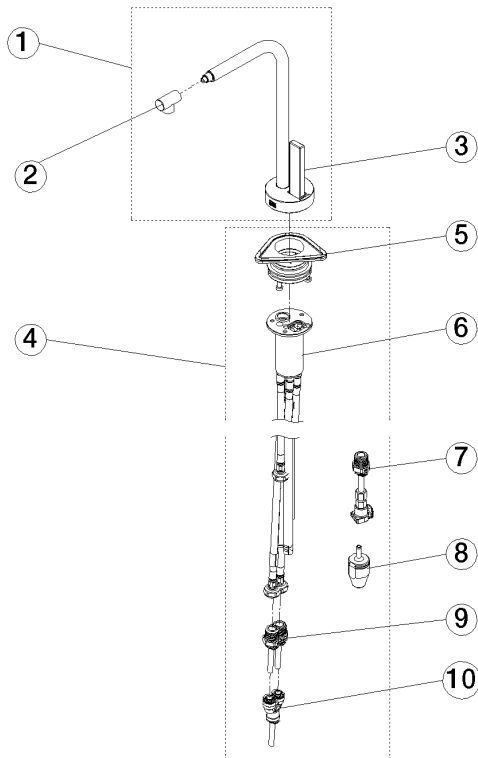
	Brushed Chrome	17 871 790-93
	Chrome	17 871 790-00
	Brushed Platinum	17 871 790-06
	Platinum	17 871 790-08
	Dark Chrome	17 871 790-19
	Brushed Durabronze (23kt Gold)	17 871 790-28
	Brushed Bronze	17 871 790-42
	Brushed Champagne (22kt Gold)	17 871 790-46
	Champagne (22kt Gold)	17 871 790-47
	Brushed Dark Platinum	17 871 790-99

17 871 790 Product version from 3/1/2025



17 871 790 Product version from 3/1/2025

Parts for other
finishes can be found
here: [Chrome](#)



Spare parts list

Number	Item Number	Designation	Number of units	Lead time
1	90 17 87 179 00-93	spout	1.00	20
2	90 17 11 048 00-93	aerator	1.00	20
3	90 20 87 028 00-93	handle	1.00	20
10	90 24 04 364 00 90	adaptor	1.00	2
7	90 24 04 293 00 90	adaptor	1.00	2
5	90 30 10 057 00 90	fixing set	1.00	2
4	90 17 87 179 01 90	set	1.00	2
6	90 30 01 220 00 90	hose	1.00	2
9	90 24 04 293 01 90	hose	1.00	2
8	90 24 04 291 00 90	insert	1.00	2