

## VAIA HOT & COLD WATER DISPENSER - Brushed Platinum

17 871 809 Product version from 3/1/2025



- 5-7/8" Projection
- Swiveling spout 360°
- Laminar stream
- Total height 11-3/8"
- 8-1/4" height to aerator/spout outlet
- 1-3/8" hole diameter
- Provides filtered, hot water, 199°F max. temperature
- Provides filtered water
- Water flow rate limited to max. 1 gpm
- mechanical valve
- lead-free
- One lever for hot and cold water
- This product can help a building meet the requirements of Green Building Rating Systems, e.g. LEED®, BREEAM®, DGNB

NOTE: Not compatible with Reverse Osmosis

Compatible with Insinkerator® hot water tank HWT300-F3000S. Tank and filter not supplied from Dornbracht. More information on tank and filter at [www.inksinkerator.com](http://www.inksinkerator.com).

Adaptor hose kit 1252097090 available to be compatible with Mountain Plumbing hot water tank MT641-3 or similar product that uses the same fitting size and configuration without vent.

Compatible with standard filtration systems or chillers with 1/4" compression connection e.g. Mountain Plumbing MT670-2.

The installation must be above a kitchen sink.

We recommend replacing the filter cartridge every six months. Please see the installation manual for more information.

Specification and technical data sheets can be found on [www.dornbracht.com/professional](http://www.dornbracht.com/professional)

	Brushed Platinum	17 871 809-06
	Chrome	17 871 809-00
	Platinum	17 871 809-08
	Durabronze (23kt Gold)	17 871 809-09
	Dark Chrome	17 871 809-19
	Brushed Durabronze (23kt Gold)	17 871 809-28
	Matte Black	17 871 809-33
	Brushed Bronze	17 871 809-42
	Brushed Champagne (22kt Gold)	17 871 809-46
	Champagne (22kt Gold)	17 871 809-47
	Brushed Chrome	17 871 809-93
	Brushed Dark Platinum	17 871 809-99

### Recommended article

**Adapter**

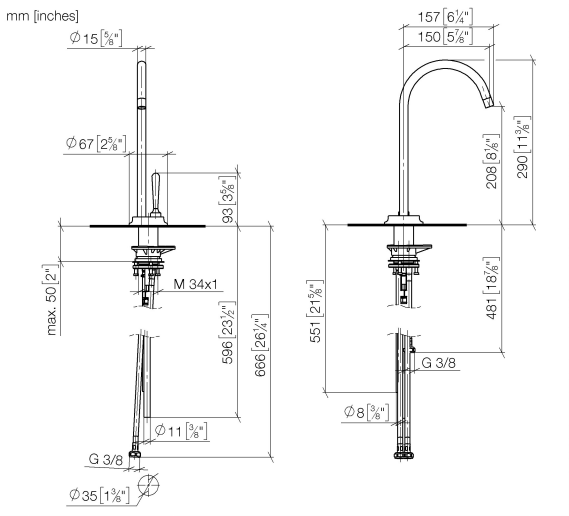
12 520 970 90



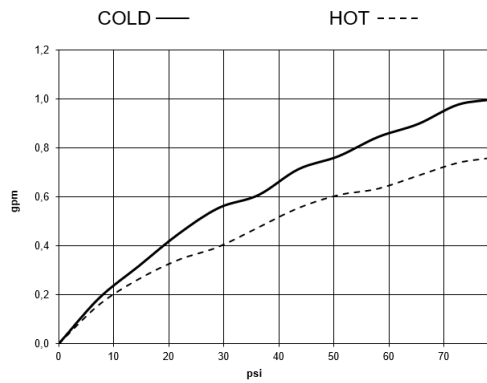


VAIA HOT & COLD WATER DISPENSER - Brushed Platinum

17 871 809    Product version from 3/1/2025

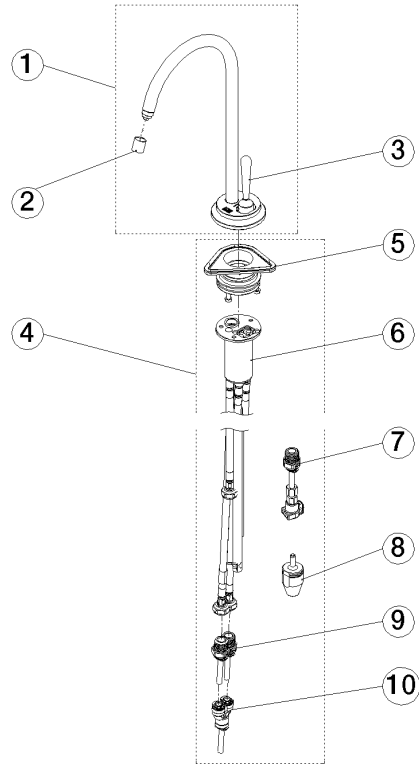


Flow rate chart



VAIA HOT & COLD WATER DISPENSER - Brushed Platinum

17 871 809    Product version from 3/1/2025



Spare parts list

Number	Item Number	Designation	Number of units	Lead time
1	90 17 87 180 90-06	spout	1	-
Spare part can no longer be ordered, please order the replacement item				
2	90 17 87 179 00 90	set	1	-
Spare part can no longer be ordered, please order the replacement item				