

TARA HOT & COLD WATER DISPENSER - Chrome

TARA

17 871 888 Product version from 3/1/2025



- 5-3/4" Projection
- Swiveling spout 360°
- Laminar stream
- Total height 11-3/8"
- 7-1/8" height to aerator/spout outlet
- 1-3/8" hole diameter
- Provides filtered, hot water, 199°F max. temperature
- Provides filtered water
- Water flow rate limited to max. 1 gpm
- mechanical valve
- lead-free
- One lever for hot and cold water
- This product can help a building meet the requirements of Green Building Rating Systems, e.g. LEED®, BREEAM®, DGNB

Compatible with Insinkerator® hot water tank HWT300-F3000S. Tank and filter not supplied from Dornbracht. More information on tank and filter at www.inksinkerator.com.

Compatible with standard filtration systems or chillers with 1/4" compression connection e.g. Mountain Plumbing MT670-2.

The installation must be above a kitchen sink.

We recommend replacing the filter cartridge every six months. Filter not supplied by Dornbracht. Please see the installation manual for more information.

Specification and technical data sheets can be found on www.dornbracht.com/professional

NOTE: Not compatible with Reverse Osmosis

Adaptor hose kit 1252097090 available to be compatible with Mountain Plumbing hot water tank MT641-3 or similar product that uses the same fitting size and configuration without vent.

Not compatible with reverse osmosis filtration

	Chrome	17 871 888-00
	Brushed Platinum	17 871 888-06
	Platinum	17 871 888-08
	Durabronze (23kt Gold)	17 871 888-09
	Dark Chrome	17 871 888-19
	Brushed Durabronze (23kt Gold)	17 871 888-28
	Matte Black	17 871 888-33
	Brushed Bronze	17 871 888-42
	Brushed Champagne (22kt Gold)	17 871 888-46
	Champagne (22kt Gold)	17 871 888-47
	Brushed Chrome	17 871 888-93
	Brushed Dark Platinum	17 871 888-99

Recommended article

Adapter

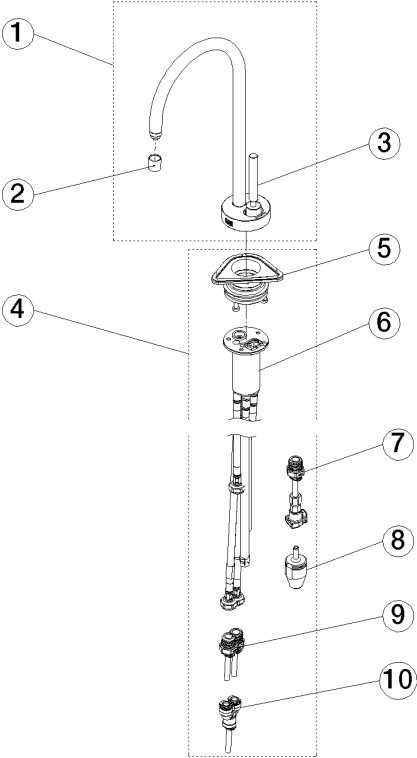
12 520 970 90



17 871 888 Product version from 3/1/2025

mm [inches]





Spare parts list

Number	Item Number	Designation	Number of units	Lead time
1	90 17 87 188 80-00	spout	1.00	10
2	90 17 87 179 01 90	set	1.00	2