

## VAIA Three-hole bridge mixer Pull-down with spray function - Brushed Platinum

VAIA

19 870 809 Product version from 7/1/2023



- 9-1/2" Projection
- Swiveling spout 360°
- Optional restricted swivel available with swivel limiter set 12 823 970 90
- Aerated stream and spray mode
- Total height 15-1/2"
- 8" height to aerator/spout outlet
- 1-3/8" hole diameter
- 2 x pressure hose with 3/8" compression fitting
- 59" metal shower hose
- Sprayface with descaling system
- Water flow rate limited to max. 1.5 gpm
- lead-free
- Spray types can be changed while the water is running
- This product can help a building meet the requirements of Green Building Rating Systems, e.g. LEED®, BREEAM®, DGNB

(ADA)

Internal backflow preventer.

Switch back and forth between aerator and spray mode while water is running.

|  |                                |                    |
|--|--------------------------------|--------------------|
|  | Brushed Platinum               | 19 870 809-06 0010 |
|  | Chrome                         | 19 870 809-00 0010 |
|  | Platinum                       | 19 870 809-08 0010 |
|  | Durabronze (23kt Gold)         | 19 870 809-09 0010 |
|  | Dark Chrome                    | 19 870 809-19 0010 |
|  | Brushed Durabronze (23kt Gold) | 19 870 809-28 0010 |
|  | Matte Black                    | 19 870 809-33 0010 |
|  | Brushed Bronze                 | 19 870 809-42 0010 |
|  | Brushed Champagne (22kt Gold)  | 19 870 809-46 0010 |
|  | Champagne (22kt Gold)          | 19 870 809-47 0010 |
|  | Brushed Chrome                 | 19 870 809-93 0010 |
|  | Brushed Dark Platinum          | 19 870 809-99 0010 |

### Recommended article



**Swivel limiter set -**

12 823 970 90

### Recommended article



**VAIA AIR SWITCH operating button, trim parts only - Brushed Platinum**

10 713 809-06

### Recommended article

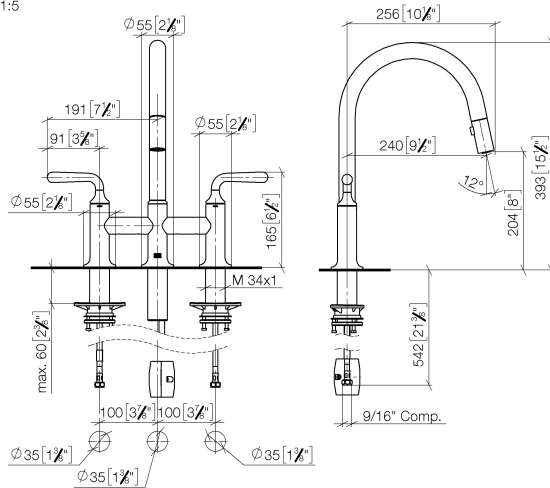


**VAIA Soap dispenser with flange - Brushed Platinum**

82 434 809-06

19 870 809 Product version from 7/1/2023

mm [inches]  
1:5

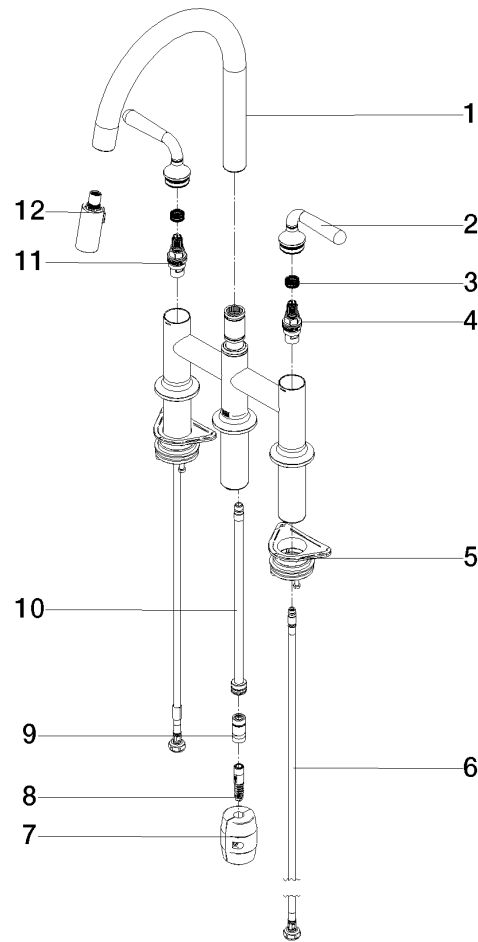


## Codes & Standards

|        |                |                                    |      |
|--------|----------------|------------------------------------|------|
| ADA    | ASME A112.18.1 | California Energy Commission (CEC) | cUPC |
| NSF372 | NSF61          |                                    |      |

## Certificates and sustainability

|            |              |            |
|------------|--------------|------------|
| IAPMO_4976 | IAPMO_N-4976 | IAPMO_6397 |
|------------|--------------|------------|



## Spare parts list

| Number | Item Number        | Designation | Number of units | Lead time |
|--------|--------------------|-------------|-----------------|-----------|
| 4      | 90 90 03 130 00 90 | top         | 1.00            | 2         |
| 2      | 90 20 80 057 00-06 | handle      | 2.00            | 10        |
| 3      | 90 12 12 232 00 90 | fixing cap  | 2.00            | 2         |
| 1      | 90 28 22 397 00-06 | spout       | 1.00            | 10        |
| 5      | 04 30 11 040 00 90 | fixing set  | 2.00            | 2         |
| 6      | 04 30 04 103 00 90 | hose        | 2.00            | 2         |
| 7      | 04 21 50 010 00 90 | accessories | 1.00            | 2         |
| 10     | 04 28 20 067 00 90 | pipe        | 1.00            | 2         |
| 9      | 90 24 03 253 00 90 | adaptor     | 1.00            | 2         |
| 11     | 90 90 03 131 00 90 | top         | 1.00            | 2         |
| 12     | 90 18 40 317 00-06 | shower      | 1.00            | 10        |
| 8      | 04 30 02 120 00-85 | hose        | 1.00            | 10        |