



- 9-1/2" Projection
- Swiveling spout 360°
- Optional restricted swivel available with swivel limiter set 12 823 970 90
- Aerated stream and spray mode
- Total height 15-1/2"
- 8" height to aerator/spout outlet
- 1-3/8" hole diameter
- 2 x pressure hose with 3/8" compression fitting
- 59" metal shower hose
- Sprayface with descaling system
- Water flow rate limited to max. 1.5 gpm
- lead-free
- Spray types can be changed while the water is running
- This product can help a building meet the requirements of Green Building Rating Systems, e.g. LEED®, BREEAM®, DGNB

(ADA)

Internal backflow preventer.

Switch back and forth between aerator and spray mode while water is running.

	Brushed Chrome	19 870 809-93 0010
	Chrome	19 870 809-00 0010
	Brushed Platinum	19 870 809-06 0010
	Platinum	19 870 809-08 0010
	Durabronze (23kt Gold)	19 870 809-09 0010
	Dark Chrome	19 870 809-19 0010
	Brushed Durabronze (23kt Gold)	19 870 809-28 0010
	Matte Black	19 870 809-33 0010
	Brushed Bronze	19 870 809-42 0010
	Brushed Champagne (22kt Gold)	19 870 809-46 0010
	Champagne (22kt Gold)	19 870 809-47 0010
	Brushed Dark Platinum	19 870 809-99 0010

Recommended article

Swivel limiter set -

12 823 970 90



Recommended article

VAIA AIR SWITCH operating button, trim parts only - Brushed Chrome

10 713 809-93



Recommended article

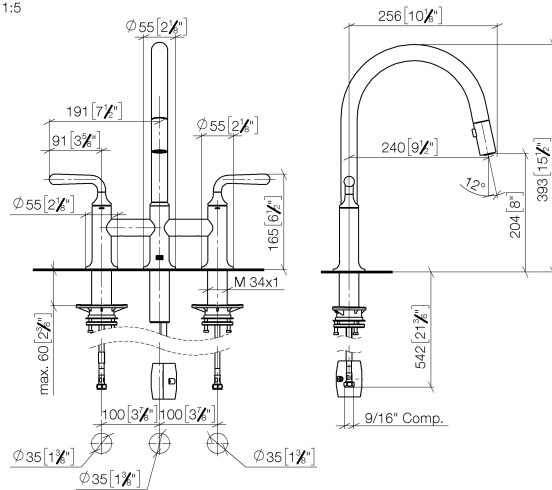
VAIA Soap dispenser with flange - Brushed Chrome

82 434 809-93



19 870 809 Product version from 7/1/2023

mm [inches]
1:5

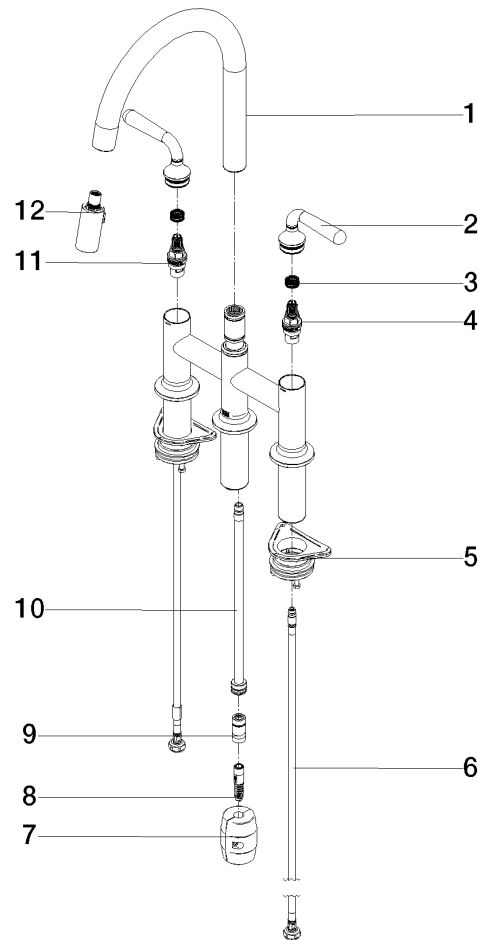


Codes & Standards

ADA	ASME A112.18.1	California Energy Commission (CEC)	cUPC
NSF372	NSF61		

Certificates and sustainability

IAPMO_4976 IAPMO_N-4976 IAPMO_6397



Spare parts list

Number	Item Number	Designation	Number of units	Lead time
7	04 21 50 010 00 90	accessories	1.00	2
3	90 12 12 232 00 90	fixing cap	2.00	2
2	90 20 80 057 00-93	handle	2.00	20
1	90 28 22 397 00-93	spout	1.00	20
4	90 90 03 130 00 90	top	1.00	2
5	04 30 11 040 00 90	fixing set	2.00	2
6	04 30 04 103 00 90	hose	2.00	2
11	90 90 03 131 00 90	top	1.00	2
9	90 24 03 253 00 90	adaptor	1.00	2
10	04 28 20 067 00 90	pipe	1.00	2
12	90 18 40 317 00-93	shower	1.00	20
8	04 30 02 120 00-85	hose	1.00	10